

## Product datasheet for PH314542

### RGS11 (NM\_003834) Human Mass Spec Standard

#### Product data:

Product Type:	Mass Spec Standards
Description:	RGS11 MS Standard C13 and N15-labeled recombinant protein (NP_003825)
Species:	Human
Expression Host:	HEK293
Expression cDNA Clone or AA Sequence:	RC214542
Predicted MW:	50.5 kDa
Protein Sequence:	>RC214542 representing NM_003834 Red=Cloning site Green=Tags(s)
	MERVVSMQDPDQGVKMRSQLLVTVIPHAVTGSDDVQWLAQKFCVSEEEALHLGAVLVQHGYIYPLRDP RSLMLRPDETPYRFQTPYFWTSLRPAEELDYAIYLAKKNIRKRGTLVDYKDCYDRLHKKINHAWDLVL MQAREQLRAAKQRSGDRLVIACQEQTWLVNRPPPGAPDVLEQGPGRGSCAASRVLMTKSADFKREIE YFRKALGRTRVKSSVCLAYLSFCGQRGPHDPLVSGCLPSNPWISDNDAYWVMNAPTVAAPTCLRVERWG FSFRELLEDPVGRAHFMDFLGKEFSGENLSFWEACEELRYGAQAQVPTLVDAVYEQFLAPGAAHWVNIDS RTMEQTLLEGLRQPHRYVLDQAQLHIYMLMKKDSYPRFLKSDMYKALLAEAGIPLMKRRVFPFTWRPRHS SPSPALLPTPVEPTAACGPGGGDVA
	SGPTRRRLEQKLISEEDLAANDILDYKDDDDKV
Tag:	C-Myc/DDK
Purity:	> 80% as determined by SDS-PAGE and Coomassie blue staining
Concentration:	>0.05 µg/µL as determined by microplate BCA method
Labeling Method:	Labeled with [U- <sup>13</sup> C <sub>6</sub> , <sup>15</sup> N <sub>4</sub> ]-L-Arginine and [U- <sup>13</sup> C <sub>6</sub> , <sup>15</sup> N <sub>2</sub> ]-L-Lysine
Buffer:	25 mM Tris-HCl, 100 mM glycine, pH 7.3
Storage:	Store at -80°C. Avoid repeated freeze-thaw cycles.
Stability:	Stable for 3 months from receipt of products under proper storage and handling conditions.
RefSeq:	<u>NP_003825</u>
RefSeq Size:	2384
RefSeq ORF:	1338
Synonyms:	RS11



[View online »](#)

Locus ID: 8786

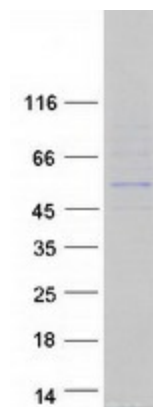
UniProt ID: [O94810](#)

Cytogenetics: 16p13.3

**Summary:** The protein encoded by this gene belongs to the RGS (regulator of G protein signaling) family. Members of the RGS family act as GTPase-activating proteins on the alpha subunits of heterotrimeric, signal-transducing G proteins. This protein inhibits signal transduction by increasing the GTPase activity of G protein alpha subunits, thereby driving them into their inactive GDP-bound form. Alternative splicing occurs at this locus and four transcript variants encoding distinct isoforms have been identified. [provided by RefSeq, Nov 2013]

**Protein Families:** Druggable Genome

### Product images:



Coomassie blue staining of purified RGS11 protein (Cat# [TP314542]). The protein was produced from HEK293T cells transfected with RGS11 cDNA clone (Cat# [RC214542]) using MegaTran 2.0 (Cat# [TT210002]).