

Product datasheet for PH314538

TUB (NM_177972) Human Mass Spec Standard

Product data:

Product Type:	Mass Spec Standards
Description:	TUB MS Standard C13 and N15-labeled recombinant protein (NP_813977)
Species:	Human
Expression Host:	HEK293
Expression cDNA Clone or AA Sequence:	RC214538
Predicted MW:	55.5 kDa
Protein Sequence:	>RC214538 representing NM_177972 Red =Cloning site Green =Tags(s) MTSKPHSDWIPYSVLDDDEGRNLRQQLDRQRALLEQKQKQKRRQEPMLVQANADGRPRRRARQSEEQAPL VESYLSSSGSTSYQVQEADSLASVQLGATRPTAPASAKRTKAAATAGGQGGAAARKEKKGKHKGTSGPAAL AEDKSEAQGPVQILTVGQSDHAQDAGETAAGGGERPSGQDLRATMQRKGISSSMSFDEDEEDEEENSSSS SQLNSNTRPSSATSRKSVREAASAPSPTAPEQPVDVEVQDLEEFALRPAPQGITIKCRITRDKKGMDRGM YPTYFLHLDREDGKKVFLLAGRKRKSKTSNYLISVDPTDL SRGGDSYIGKLRSNLMGTFKFTVYDNGVNP QKASSSTLESGLRQELAAVCYETNVLGFKGPRKMSVIVPGMMVHERVSI RPRNEHETLLARWQNKNT SIIELQNKTPVWDDTQSYVLNFHGRVTQASVKNFQIIHGNDPDYIVMQFGRVAEDVFTMDYNYPLCALQ AFAIALSSFDSKLACE TRTRPLEQKLI SEEDLAANDILDYKDDDDKV
Tag:	C-Myc/DDK
Purity:	> 80% as determined by SDS-PAGE and Coomassie blue staining
Concentration:	>0.05 µg/µL as determined by microplate BCA method
Labeling Method:	Labeled with [U- ¹³ C ₆ , ¹⁵ N ₄]-L-Arginine and [U- ¹³ C ₆ , ¹⁵ N ₂]-L-Lysine
Buffer:	25 mM Tris-HCl, 100 mM glycine, pH 7.3
Storage:	Store at -80°C. Avoid repeated freeze-thaw cycles.
Stability:	Stable for 3 months from receipt of products under proper storage and handling conditions.
RefSeq:	<u>NP_813977</u>
RefSeq Size:	6172
RefSeq ORF:	1518



[View online »](#)

Synonyms: rd5; RDOB

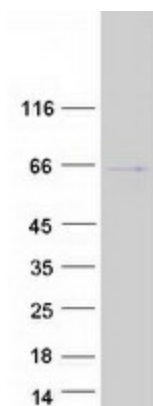
Locus ID: 7275

UniProt ID: [P50607](#)

Cytogenetics: 11p15.4

Summary: This gene encodes a member of the Tubby family of bipartite transcription factors. The encoded protein may play a role in obesity and sensorineural degradation. The crystal structure has been determined for a similar protein in mouse, and it functions as a membrane-bound transcription regulator that translocates to the nucleus in response to phosphoinositide hydrolysis. Two transcript variants encoding distinct isoforms have been identified for this gene. [provided by RefSeq, Jul 2008]

Product images:



Coomassie blue staining of purified TUB protein (Cat# [TP314538]). The protein was produced from HEK293T cells transfected with TUB cDNA clone (Cat# [RC214538]) using MegaTran 2.0 (Cat# [TT210002]).