

Product datasheet for PH314524

PCDH10 (NM_020815) Human Mass Spec Standard

Product data:

Product Type:	Mass Spec Standards
Description:	PCDH10 MS Standard C13 and N15-labeled recombinant protein (NP_065866)
Species:	Human
Expression Host:	HEK293
Expression cDNA Clone or AA Sequence:	RC214524
Predicted MW:	94.9 kDa
Protein Sequence:	>RC214524 representing NM_020815 Red=Cloning site Green=Tags(s)

MIVLLLFALLWMVEGVFSQLHYTVQEEQEHGTFVGNIAEDLGLDITKLSARGFQTPNSRTPYLDLNLLET
GVLYVNEKIDREQICKQSPSCVLHLEVFLLENPLELFQVEIEVLDINDNPPSFPEPDLTVEISESATPGTR
FPLESAFDPDVGNTSLRDYEITPNSYFSLDVQTQGDGNRF AELVLEKPLDREQQAVHRYVLTAVDGGGGG
GVGEGGGGGGAGLPPQQQRTGTALLTIRVLDSDNDNVPAPFDQPVYTVSLPENSPPGTLVIQLNATDPDEG
QNGEVVYFSSSHISPRARELFGLSPRTGRLEVSGELDYEEESPVYQVYVQAKDLGPNVAVPAHCKVLVRVLD
ANDNAPEISFSTVKEAVSEGAAPGTVALFSVTDTRDSEENGQVQCELLGDVPFRLKSSFKNYTIVTEAP
LDREAGDSYTLTVVARDRGEPALSTSKSIQVQVSDVNDNAPRFSQPVYDVVVTENNVPAYIYAVSATDR
DEGANALAYSILECQIQGMSVFTYVSINSENGYLALRSFDYEQKDFSFQVEARDAGSPQALAGNATV
NILIVDQNDNAPAIIVAPLPGRNGTPAREVLPRSAEPGYLLTRVAAVDADDGENARLTYSIVRGNEMNLF
MDWRTGELRTARRVPAKRDPQRPYELVIEVRDHGQPPLSSTATLVVQLVDGAVEPQGGGGSGGGSGGEHQ
RPSRSGGGGETSLDLTLILIIALGSVSFIFLLAMIVLAVRCQKEKLNIIYTCLASDCCLCCCCGGGGSTC
CGRQARARKKLSKSDIMLVQSSNVPSNPAQVP IEESSGGFGSHHHNQNYCYQVCLTPESAKTDLMLKPC
SPSRSTDTEHNPCGAIVTGYTDQQPDIIISNGSILSNEVRLKRKDHHLSSPPSESL

TRTRPLEQKLI SEEDLAANDILDYKDDDDKV

Tag:	C-Myc/DDK
Purity:	> 80% as determined by SDS-PAGE and Coomassie blue staining
Concentration:	>0.05 µg/µL as determined by microplate BCA method
Labeling Method:	Labeled with [U- ¹³ C ₆ , ¹⁵ N ₄]-L-Arginine and [U- ¹³ C ₆ , ¹⁵ N ₂]-L-Lysine
Buffer:	25 mM Tris-HCl, 100 mM glycine, pH 7.3
Storage:	Store at -80°C. Avoid repeated freeze-thaw cycles.
Stability:	Stable for 3 months from receipt of products under proper storage and handling conditions.



[View online »](#)

RefSeq: [NP_065866](#)

RefSeq Size: 3935

RefSeq ORF: 2688

Synonyms: OL-PCDH; PCDH19

Locus ID: 57575

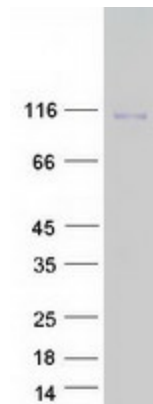
UniProt ID: [Q9P2E7](#)

Cytogenetics: 4q28.3

Summary: This gene belongs to the protocadherin gene family, a subfamily of the cadherin superfamily. This family member contains 6 extracellular cadherin domains, a transmembrane domain and a cytoplasmic tail differing from those of the classical cadherins. The encoded protein is a cadherin-related neuronal receptor thought to function in the establishment of specific cell-cell connections in the brain. This gene plays a role in inhibiting cancer cell motility and cell migration. Alternative splicing results in multiple transcript variants encoding different isoforms. [provided by RefSeq, Jan 2015]

Protein Families: Druggable Genome, Transmembrane

Product images:



Coomassie blue staining of purified PCDH10 protein (Cat# [TP314524]). The protein was produced from HEK293T cells transfected with PCDH10 cDNA clone (Cat# [RC214524]) using MegaTran 2.0 (Cat# [TT210002]).