

Product datasheet for PH314483

UBA6 (NM_018227) Human Mass Spec Standard

Product data:

Product Type:	Mass Spec Standards
Description:	UBA6 MS Standard C13 and N15-labeled recombinant protein (NP_060697)
Species:	Human
Expression Host:	HEK293
Expression cDNA Clone or AA Sequence:	RC214483
Predicted MW:	117.8 kDa
Protein Sequence:	>RC214483 representing NM_018227 Red=Cloning site Green=Tags(s)

MEGSEPVAAHQGEAEASCSWGTGSTNKNLPI MSTASVEIDDALYSRQRYVLGDTAMQKMAKSHVFLSGMG
GLGLEIAKNLVLAGIKAVTIHDTTEKQAWDLGTNFFLSEDDVVNKRNRAEAVLKHIAELNPYVHVTSSSV
PFNETTDL SFLDKYQCVVLTEMKLP LQKKINDFCRSQCPIKFI SADVHGIWSRLFCDFGDEFVLDTTG
EEPKEIFISNITQANPGIVTCLNHPHKLETGQFLTFREINGMTGLNGSIQQITVISPFSFSIGDTTELE
PYLHGGIAVQVKTPKTVFFESLERQLKHPKCLIVDFSNPEAPLEIHTAMLALDQFQEKYSRKNVGCQQD
SEELLKLATSISETLEEKPDVNADIVHWL SWTAQGFLSPLAAAVGGVASQEV LKAVTGKFSPLCQWLYLE
AADIVESL GKPECEEFLPRGDRYDALRACIGDTLCQKLQNLNIFLVGCGAIGCEMLKNFALLGVGTSKEK
GMTVTD PDLIEKSNLNRQFLFRPHHIQPKSYTAADATL KINSQIKIDAHLNKVCP TTTETIYNDEFYTK
QDVIITALDNVEARRYVDSRCLANLRPLLD SGTMGTKGHTEVIVPHL TESYNSHRDPPEE EIPFCTLKS F
PAAIEHTIQWARDKFESSFSHKP SFLFNKFWQTYSSAEV LQKIQSGHSLGECFQVIKLLSRRPRNWSQCV
ELARLKF EKYFNHKA LQLLHCFPLDIRLKD GSLFWQSPKRPPSP IKFDLNEPLHLSFLQNAAKLYATVYC
IPFAEEDL SADALLNILSEVKIQEFKPSNKVVQTD ETARKPDHVPISSEDERNAIFQLEKAILSNEATKS
DLQMAVLSFEKDDDHNGHIDFITAASNLRAKMYSIEPADRFKTKRIAGKIIPAIATTTATVSGLVALEMI
KVTGGYPFEAYKNCFLNLAIPVVF TETTEVRKTKIRNGISFTIWRWTVHGKEDFTLLDFINAVKEKYG
IEPTMVVQGVKMLYVPM PGHAKRLKLTMHKLVKPTTEKKYVDLTVSFA PDIDGDEDLPGPPVRYF SHD
TD

TRTRPLEQKLISEEDLAANDILDYKDDDDKV

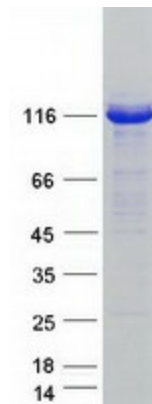
Tag:	C-Myc/DDK
Purity:	> 80% as determined by SDS-PAGE and Coomassie blue staining
Concentration:	>0.05 µg/µL as determined by microplate BCA method
Labeling Method:	Labeled with [U- ¹³ C ₆ , ¹⁵ N ₄]-L-Arginine and [U- ¹³ C ₆ , ¹⁵ N ₂]-L-Lysine
Buffer:	25 mM Tris-HCl, 100 mM glycine, pH 7.3



[View online »](#)

Storage:	Store at -80°C. Avoid repeated freeze-thaw cycles.
Stability:	Stable for 3 months from receipt of products under proper storage and handling conditions.
RefSeq:	NP_060697
RefSeq Size:	6462
RefSeq ORF:	3156
Synonyms:	E1-L2; MOP-4; UBE1L2
Locus ID:	55236
UniProt ID:	A0AVT1 , A1LT96
Cytogenetics:	4q13.2
Summary:	Modification of proteins with ubiquitin (UBB; MIM 191339) or ubiquitin-like proteins controls many signaling networks and requires a ubiquitin-activating enzyme (E1), a ubiquitin conjugating enzyme (E2), and a ubiquitin protein ligase (E3). UBE1L2 is an E1 enzyme that initiates the activation and conjugation of ubiquitin-like proteins (Jin et al., 2007 [PubMed 17597759]).[supplied by OMIM, Mar 2008]
Protein Pathways:	Ubiquitin mediated proteolysis

Product images:



Coomassie blue staining of purified UBA6 protein (Cat# [TP314483]). The protein was produced from HEK293T cells transfected with UBA6 cDNA clone (Cat# [RC214483]) using MegaTran 2.0 (Cat# [TT210002]).