

Product datasheet for PH314480

TCP1 delta (CCT4) (NM_006430) Human Mass Spec Standard

Product data:

Product Type:	Mass Spec Standards
Description:	CCT4 MS Standard C13 and N15-labeled recombinant protein (NP_006421)
Species:	Human
Expression Host:	HEK293
Expression cDNA Clone or AA Sequence:	RC214480
Predicted MW:	57.7 kDa
Protein Sequence:	>RC214480 representing NM_006430 Red=Cloning site Green=Tags(s)
	MPENVAPRSGATAGAAGGRGKGYQDRDKPAQIRFSNISAAKAVADAIRTSLGPKGMDKMIQDQKGDVTI TNDGATILKQMQLHPAARMLVELSKAQDIEAGDGTTSVVIIAGSLLDSCTKLLQKGIHPTIISESFQKA LEKGIEILTDMSRPVELSDRETLNLSATSLNSKVVSQYSSLLSPMSVNAVYMKVIDPATATSVDLRDIKI VKKLGITDDCELVGLVLTQKVSNSGITRVEKAKIGLIQFCLSAPKTDMDNQIVVSDYQMDRVLREER AYILNLVKQIKKTGCNVLLIQKSILRDALSDLALHFLNKMIMVIKDIEREDIEFICKTIGTKPVAHIDQ FTADMLGSAELAEVNLNGSGKLLKITGCASPGKTVTVVIRGSKLVIEEAERSIHDALCVIRCLVKKRA LIAGGGAPEIELALRLTEYSRTLSGMESYCVRAFADAMEVIPSTLAENAGLNPISVTELRNRHAQGEKT AGINVRKGGISNILEELVVQPLLVSVALTLATETVRSILKIDDDVNT
	TRTRPLEQKLISEEDLAANDILDYKDDDDKV
Tag:	C-Myc/DDK
Purity:	> 80% as determined by SDS-PAGE and Coomassie blue staining
Concentration:	>0.05 µg/µL as determined by microplate BCA method
Labeling Method:	Labeled with [U- ¹³ C ₆ , ¹⁵ N ₄]-L-Arginine and [U- ¹³ C ₆ , ¹⁵ N ₂]-L-Lysine
Buffer:	25 mM Tris-HCl, 100 mM glycine, pH 7.3
Storage:	Store at -80°C. Avoid repeated freeze-thaw cycles.
Stability:	Stable for 3 months from receipt of products under proper storage and handling conditions.
RefSeq:	NP_006421
RefSeq Size:	2349
RefSeq ORF:	1617



[View online »](#)

Synonyms: CCT-DELTA; Cctd; SRB

Locus ID: 10575

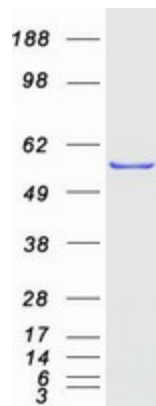
UniProt ID: [P50991](#)

Cytogenetics: 2p15

Summary: The chaperonin containing TCP1 (MIM 186980) complex (CCT), also called the TCP1 ring complex, consists of 2 back-to-back rings, each containing 8 unique but homologous subunits, such as CCT4. CCT assists the folding of newly translated polypeptide substrates through multiple rounds of ATP-driven release and rebinding of partially folded intermediate forms. Substrates of CCT include the cytoskeletal proteins actin (see MIM 102560) and tubulin (see MIM 191130), as well as alpha-transducin (MIM 139330) (Won et al., 1998 [PubMed 9819444]).[supplied by OMIM, Mar 2008]

Protein Families: Druggable Genome

Product images:



Coomassie blue staining of purified CCT4 protein (Cat# [TP314480]). The protein was produced from HEK293T cells transfected with CCT4 cDNA clone (Cat# [RC214480]) using MegaTran 2.0 (Cat# [TT210002]).