

Product datasheet for PH314451

CYLD (NM_001042412) Human Mass Spec Standard

Product data:

Product Type:	Mass Spec Standards
Description:	CYLD MS Standard C13 and N15-labeled recombinant protein (NP_001035877)
Species:	Human
Expression Host:	HEK293
Expression cDNA Clone or AA Sequence:	RC214451
Predicted MW:	107 kDa
Protein Sequence:	>RC214451 protein sequence Red=Cloning site Green=Tags(s)

MSSGLWSQEKVTSFYWEERIFYLLQLQECVTDKQTQKLLKVPKGSIGQYIQDRSVGHSRIPSAKGGKKNQI
GLKILEQPHAVLFDVDEKDVVEINEKFTLELLAITNCEERFSLFKNRNRLSKGLQIDVGCVPKVQLRSGEE
KFPVGVFRGPELLAERTVSGIFFVELLEEGRGQFTDGVYQGGKQLFQCDEDCGVFVALDKLELIEDDDT
ALESDYAGPGDTMQVELPPELINSRVSLKVGETIESGTVIFCDVLPGKESLGYFVGVDMNDPIGNWDGRF
DGVQLCSFACVESTILLHINDIIPESVTQERRPPKLAFMVRGVDKGGSSSHNKPKATGSTSDPGNRNRSE
LFYTLNGSSVDSQPQSKSKNTWYIDEVAEDPAKSLTEISTDFDRSSPPLQPPVNSLTENRFHSLPFLSL
TKMPNTNGSIGHSPLSLSAQSVMEELNTAPVQESPLAMPNGSHGLEVGSLAEVKENPPFYGVIRWIGQ
PPGLNEVLAGELEDEECAGCTDGTFRGTRYFTCALKKALFVKLKSCRPSRFASLQPVSNQIERCNSLAF
GGYLSEVVEENTPPKMEKEGLEIMIGKKGIQGHYNVSCYLDSTLFCLEAFSSVLDTVLLRPKEKNDVEEY
SETQELLRTEIVNPLRIYGYVCATKIMKLRKILEKVEAASGFTSEEKDPPEEFLNLFHHILRVEPLLKIR
SAGQKVQDCYFYQIFMEKNEKVGVPYIQQLEWSFINSNLKFAEAPSCLIIQMPRFKDFKLFKKIFPSL
ELNITDLLEDTPRQCRI CGGLAMYECRECYDDPDISAGIKQFCKTCNTQVHLHPKRLNHHKYNPVS LPKD
LPDWDWRHGCIPCQNMELFAVLCIETSHYVAFVKYGKDDSAWLFDSMADRGGQNGFNIPQVTPCPEV
EYLKMSLEDLHSLDSRRIQGCARRLLCDAYMCMYQSPTMSLYK

TRTRPLEQKLI SEEDLAANDILDYKDDDDKV

Tag:	C-Myc/DDK
Purity:	> 80% as determined by SDS-PAGE and Coomassie blue staining
Concentration:	>0.05 µg/µL as determined by microplate BCA method
Labeling Method:	Labeled with [U- ¹³ C ₆ , ¹⁵ N ₄]-L-Arginine and [U- ¹³ C ₆ , ¹⁵ N ₂]-L-Lysine
Buffer:	25 mM Tris-HCl, 100 mM glycine, pH 7.3
Storage:	Store at -80°C. Avoid repeated freeze-thaw cycles.
Stability:	Stable for 3 months from receipt of products under proper storage and handling conditions.



[View online >](#)

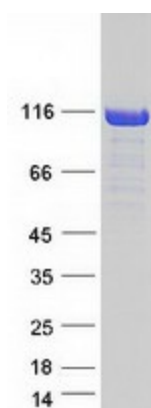
RefSeq:	<u>NP_001035877</u>
RefSeq Size:	8608
RefSeq ORF:	2859
Synonyms:	BRSS; CDMT; CYLD1; CYLDI; EAC; FTDALS8; MFT; MFT1; SBS; TEM; USPL2
Locus ID:	1540
UniProt ID:	<u>Q9NQC7, A0A024R6T1</u>
Cytogenetics:	16q12.1

Summary: This gene encodes a cytoplasmic protein with three cytoskeletal-associated protein-glycine-conserved (CAP-GLY) domains that functions as a deubiquitinating enzyme. Mutations in this gene have been associated with cylindromatosis, multiple familial trichoepithelioma, and Brooke-Spiegler syndrome. Alternate transcriptional splice variants, encoding different isoforms, have been characterized. [provided by RefSeq, Jul 2008]

Protein Families: Druggable Genome

Protein Pathways: RIG-I-like receptor signaling pathway

Product images:



Coomassie blue staining of purified CYLD protein (Cat# [TP314451]). The protein was produced from HEK293T cells transfected with CYLD cDNA clone (Cat# [RC214451]) using MegaTran 2.0 (Cat# [TT210002]).