

Product datasheet for PH314434

PHOSPHO1 (NM_178500) Human Mass Spec Standard

Product data:

Product Type:	Mass Spec Standards
Description:	PHOSPHO1 MS Standard C13 and N15-labeled recombinant protein (NP_848595)
Species:	Human
Expression Host:	HEK293
Expression cDNA Clone or AA Sequence:	RC214434
Predicted MW:	29.7 kDa
Protein Sequence:	>RC214434 protein sequence Red =Cloning site Green =Tags(s)
	MSGCFPVSGLRCLSRDGRMAAQGAPRFLLTDFDETIVDENSDDSIIVRAAPGQRLPESLRATYREGFYNE YMQRVFKYLGEQGVPRDL SAIYEA IPLSPGMSDLLQFVAKQGACFEVILISDANTFGVESSLRAAGHHS LFRRILSNPSGPDARGLLALRPFHTHSCARCPANMCKHKVLSDYLRERAHDGVHFERLFYVGDGANDFCP MGLLAGGDVAFPRRGYPMHRLIQEAQKAEPSSFRASVVPWETAADVRLHLQQVLKSC
	TRTRP LEQ KLISEEDLAANDILDYKDDDDK V
Tag:	C-Myc/DDK
Purity:	> 80% as determined by SDS-PAGE and Coomassie blue staining
Concentration:	>0.05 µg/µL as determined by microplate BCA method
Labeling Method:	Labeled with [U- ¹³ C ₆ , ¹⁵ N ₄]-L-Arginine and [U- ¹³ C ₆ , ¹⁵ N ₂]-L-Lysine
Buffer:	25 mM Tris-HCl, 100 mM glycine, pH 7.3
Storage:	Store at -80°C. Avoid repeated freeze-thaw cycles.
Stability:	Stable for 3 months from receipt of products under proper storage and handling conditions.
RefSeq:	NP_848595
RefSeq Size:	2046
RefSeq ORF:	801
Locus ID:	162466
UniProt ID:	Q8TCT1
Cytogenetics:	17q21.32



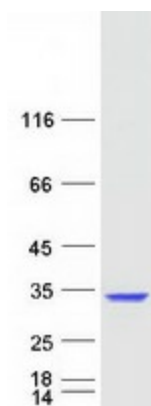
[View online »](#)

Summary: Phosphatase that has a high activity toward phosphoethanolamine (PEA) and phosphocholine (PCho). Involved in the generation of inorganic phosphate for bone mineralization. [UniProtKB/Swiss-Prot Function]

Protein Families: Druggable Genome

Protein Pathways: Glycerophospholipid metabolism

Product images:



Coomassie blue staining of purified PHOSPHO1 protein (Cat# [TP314434]). The protein was produced from HEK293T cells transfected with PHOSPHO1 cDNA clone (Cat# [RC214434]) using MegaTran 2.0 (Cat# [TT210002]).