

Product datasheet for PH314408

Integrin alpha 4 (ITGA4) (NM_000885) Human Mass Spec Standard

Product data:

Product Type:	Mass Spec Standards
Description:	ITGA4 MS Standard C13 and N15-labeled recombinant protein (NP_000876)
Species:	Human
Expression Host:	HEK293
Expression cDNA Clone or AA Sequence:	RC214408
Predicted MW:	114.87 kDa
Protein Sequence:	>RC214408 representing NM_000885 Red=Cloning site Green=Tags(s)

MAWEARREPGPRRAAVRETVMLLLCLGVPTGRPYNVDTESALLYQGPHTLFGYSVVLHSHGANRWLLVG
APTANWLANASVINPGAIYRCRIGKNPGQTCEQLQLGSPNGEPCGKTCLEERDNQWLVTLRQPGENG
IVTCGHRWKNIFYIKNENKLPITGGCYGVPDLRTELKRIAPCYQDYVKKFGENFASCQAGISSFYTKDL
IVMGAPGSSYWTGSLFVYNITTNKYKAFLDKQNVKFGSYLGYVGVGAGHFRSQHTTEVVGAPQHEQIGK
AYIFSIDEKELNILHEMKGKLSYFGASVCAVDLADGFSDLLVGAPMQSTIREEGRVVFYINSVGSVAV
MNAMEITNLVGSKYAARFGESIVNLGDIDNDFEDVAIGAPQEDDLQGAIIYNGRADGISSTFSQRIEG
LQISKSLSMFGQSIGQIDADNNGYVDVAVGAFRSDSAVLLRTRPVVIVDASLSHPESVNRKTFDCVENG
WPSVCIDLTLCSYKGEVPGYIVLFYNMSLDVNRKAESPFRFYFSSNGTSDVITGSIQVSSREANCRTH
QAFMRKDVDRDILTPIQIEAAYHLGPHVISKRSTEEFPPLQPILQQKKEKDIMKKTINFARFCAHENC
LQVSAKIGFLKPHENKTYLAVGSMKTLMLNVSLFNAGDDAYETTLHVKLPVGLYFIKILEEEKQINCEV
TDNSGVVQLDCSIGIYVDHLRIDISFLLDVSSLSRAEEDLSITVHATCENEEEMDNLKHRSRVTVAIPL
KYEVKLVHGFVNPTSFVYGSNDENEPETCMVEKMMLTFHVINTGNSMAPNVSVVEIMVPNSFSPQTDKLF
NILDVQTTTGECHFENYQRVCALEQQKSAMQTLKGIQVFLSKTDKRLLYCIKADPHCLNFCNFGKMESG
KEASVHIQLEGRPSILEMDETSALKFEIRATGFPEPNRVIELNKDENVAHVLLLEGLHHQRPKRYFTIVI
ISSLLLLGLIVLLLISYVMWKAGFFKRQYKSILQEENRRDSWSYINSKSNDD

TRTRPLEQKLISEEDLAANDILDYKDDDDKV

Tag:	C-Myc/DDK
Purity:	> 80% as determined by SDS-PAGE and Coomassie blue staining
Concentration:	>0.05 µg/µL as determined by microplate BCA method
Labeling Method:	Labeled with [U- ¹³ C ₆ , ¹⁵ N ₄]-L-Arginine and [U- ¹³ C ₆ , ¹⁵ N ₂]-L-Lysine
Buffer:	25 mM Tris-HCl, 100 mM glycine, pH 7.3
Storage:	Store at -80°C. Avoid repeated freeze-thaw cycles.



[View online >](#)

Stability: Stable for 3 months from receipt of products under proper storage and handling conditions.

RefSeq: [NP_000876](#)

RefSeq Size: 6082

RefSeq ORF: 3096

Synonyms: CD49D; IA4

Locus ID: 3676

UniProt ID: [P13612](#)

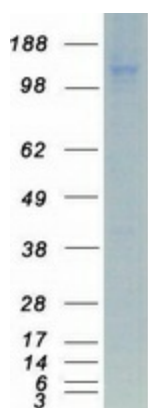
Cytogenetics: 2q31.3

Summary: The gene encodes a member of the integrin alpha chain family of proteins. Integrins are heterodimeric integral membrane proteins composed of an alpha chain and a beta chain that function in cell surface adhesion and signaling. The encoded preproprotein is proteolytically processed to generate light and heavy chains that comprise the alpha 4 subunit. This subunit associates with a beta 1 or beta 7 subunit to form an integrin that may play a role in cell motility and migration. This integrin is a therapeutic target for the treatment of multiple sclerosis, Crohn's disease and inflammatory bowel disease. Alternative splicing results in multiple transcript variants. [provided by RefSeq, Oct 2015]

Protein Families: Druggable Genome, ES Cell Differentiation/IPS, Transmembrane

Protein Pathways: Arrhythmogenic right ventricular cardiomyopathy (ARVC), Cell adhesion molecules (CAMs), Dilated cardiomyopathy, ECM-receptor interaction, Focal adhesion, Hematopoietic cell lineage, Hypertrophic cardiomyopathy (HCM), Leukocyte transendothelial migration, Regulation of actin cytoskeleton

Product images:



Coomassie blue staining of purified ITGA4 protein (Cat# [TP314408]). The protein was produced from HEK293T cells transfected with ITGA4 cDNA clone (Cat# [RC214408]) using MegaTran 2.0 (Cat# [TT210002]).