

## Product datasheet for PH314405

### RNASE4 (NM\_194431) Human Mass Spec Standard

#### Product data:

Product Type:	Mass Spec Standards
Description:	RNASE4 MS Standard C13 and N15-labeled recombinant protein (NP_919412)
Species:	Human
Expression Host:	HEK293
Expression cDNA Clone or AA Sequence:	RC214405
Predicted MW:	13.8 kDa
Protein Sequence:	>RC214405 representing NM_194431 Red=Cloning site Green=Tags(s)  MALQRTHSLLLLLLLLSLLGLGLVQPSYGQDGMVQRFLRQHVHPEETGGSDRYCNLMMQRRKMTLYHCKRF NTFIHEDIWNIRSICSTTNIQCKNGKMNCHEGVVKVTDCRDTGSSRAPNCRYRAIASTRRVVIACEGNPQ VPVHFDG  TRTRPLEQKLI SEEDLAANDILDYKDDDDKV
Tag:	C-Myc/DDK
Purity:	> 80% as determined by SDS-PAGE and Coomassie blue staining
Concentration:	>0.05 µg/µL as determined by microplate BCA method
Labeling Method:	Labeled with [U- 13C6, 15N4]-L-Arginine and [U- 13C6, 15N2]-L-Lysine
Buffer:	25 mM Tris-HCl, 100 mM glycine, pH 7.3
Storage:	Store at -80°C. Avoid repeated freeze-thaw cycles.
Stability:	Stable for 3 months from receipt of products under proper storage and handling conditions.
RefSeq:	<a href="#">NP_919412</a>
RefSeq Size:	1361
RefSeq ORF:	441
Synonyms:	RAB1; RNS4
Locus ID:	6038
UniProt ID:	<a href="#">P34096</a> , <a href="#">Q53XB4</a>



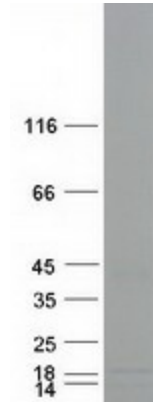
[View online »](#)

**Cytogenetics:** 14q11.2

**Summary:** The protein encoded by this gene belongs to the pancreatic ribonuclease family. It plays an important role in mRNA cleavage and has marked specificity towards the 3' side of uridine nucleotides. Alternative splicing results in four transcript variants encoding the same protein. This gene and the gene that encodes angiogenin share promoters and 5' exons. Each gene splices to a unique downstream exon that contains its complete coding region. [provided by RefSeq, Aug 2013]

**Protein Families:** Secreted Protein, Transmembrane

**Product images:**



Coomassie blue staining of purified RNASE4 protein (Cat# [TP314405]). The protein was produced from HEK293T cells transfected with RNASE4 cDNA clone (Cat# [RC214405]) using MegaTran 2.0 (Cat# [TT210002]).