

Product datasheet for PH314343

Aminomethyltransferase (AMT) (NM_000481) Human Mass Spec Standard

Product data:

Product Type:	Mass Spec Standards
Description:	AMT MS Standard C13 and N15-labeled recombinant protein (NP_000472)
Species:	Human
Expression Host:	HEK293
Expression cDNA Clone or AA Sequence:	RC214343
Predicted MW:	43.8 kDa
Protein Sequence:	>RC214343 representing NM_000481 Red=Cloning site Green=Tags(s) MQRAVSVVARLGFRLQAFPPALCRPLSCAQEVLRRTPLYDFHLAHGGKMVAFAGWSLPVQYRDSHTDSSL HTRQHCSLFDVSHMLQTKILGSDRVKLMESLVVGDIAELRPNQGTLSLFTNEAGGILDDLIVTNTSEGHL YVVSNAGCWEKDLALMQDKVRELQNGRQVGLVLDNALLALQGPTAAQVLQAGVADDLRLKLPFMTSAVM EVFVSGCRVTRCGYTGEDGVEISVPVAGAVHLATAILKNPEVKLAGLAARDSLRLEAGLCLYGNDIDEH TTPVEGSLSWTLGKRRRAAMDFPGAKVIYPQLKGRVQRRRVGLMCEGAPMRAHSPILNMEGTKIGVTSG CPSPSLKKNVAMGYVPCYSRPGTMLLVEVRRKQQMAVSKMPFVPTNYITLK TRTRPLEQKLI SEEDLAANDILDYKDDDDKV
Tag:	C-Myc/DDK
Purity:	> 80% as determined by SDS-PAGE and Coomassie blue staining
Concentration:	>0.05 µg/µL as determined by microplate BCA method
Labeling Method:	Labeled with [U- ¹³ C ₆ , ¹⁵ N ₄]-L-Arginine and [U- ¹³ C ₆ , ¹⁵ N ₂]-L-Lysine
Buffer:	25 mM Tris-HCl, 100 mM glycine, pH 7.3
Storage:	Store at -80°C. Avoid repeated freeze-thaw cycles.
Stability:	Stable for 3 months from receipt of products under proper storage and handling conditions.
RefSeq:	<u>NP_000472</u>
RefSeq Size:	2117
RefSeq ORF:	1209
Synonyms:	GCE; GCST; GCVT; NKH
Locus ID:	275



[View online »](#)

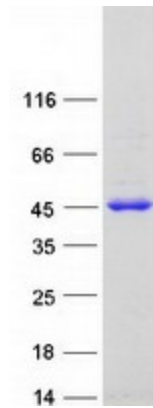
UniProt ID: [P48728](#), [A0A024R2U7](#)

Cytogenetics: 3p21.31

Summary: This gene encodes one of four critical components of the glycine cleavage system. Mutations in this gene have been associated with glycine encephalopathy. Multiple transcript variants encoding different isoforms have been found for this gene. [provided by RefSeq, Sep 2011]

Protein Pathways: Glycine, serine and threonine metabolism, Metabolic pathways, Nitrogen metabolism, One carbon pool by folate

Product images:



Coomassie blue staining of purified AMT protein (Cat# [TP314343]). The protein was produced from HEK293T cells transfected with AMT cDNA clone (Cat# [RC214343]) using MegaTran 2.0 (Cat# [TT210002]).