

## Product datasheet for PH314267

### RS1 (NM\_000330) Human Mass Spec Standard

#### Product data:

Product Type:	Mass Spec Standards
Description:	RS1 MS Standard C13 and N15-labeled recombinant protein (NP_000321)
Species:	Human
Expression Host:	HEK293
Expression cDNA Clone or AA Sequence:	RC214267
Predicted MW:	25.59 kDa
Protein Sequence:	>RC214267 representing NM_000330 Red=Cloning site Green=Tags(s)  MSRKIEGFLLLLLFGYEATLGLSSTEDEGEDPWYQKACKCDCQGGPNALWSAGATSLDCIPECPYHKPLG FESGEVTPDQITCSNPEQYVGWYSSWTANKARLNSQGFCAWLSKFQDSSQWLQIDLKEIKVISGILTQG RCDIDEMTKYSVQYRTDERLNWIYYKDQTGNRNVFYGNSDRSTVQNLRRPPIISRFIRLIPLGWHVRI AIRMELLECVSKCA  TRTRPLEQKLI SEEDLAANDILDYKDDDDKV
Tag:	C-Myc/DDK
Purity:	> 80% as determined by SDS-PAGE and Coomassie blue staining
Concentration:	>0.05 µg/µL as determined by microplate BCA method
Labeling Method:	Labeled with [U- <sup>13</sup> C <sub>6</sub> , <sup>15</sup> N <sub>4</sub> ]-L-Arginine and [U- <sup>13</sup> C <sub>6</sub> , <sup>15</sup> N <sub>2</sub> ]-L-Lysine
Buffer:	25 mM Tris-HCl, 100 mM glycine, pH 7.3
Storage:	Store at -80°C. Avoid repeated freeze-thaw cycles.
Stability:	Stable for 3 months from receipt of products under proper storage and handling conditions.
RefSeq:	<a href="#">NP_000321</a>
RefSeq Size:	3046
RefSeq ORF:	672
Synonyms:	RS; XLR51
Locus ID:	6247
UniProt ID:	<a href="#">O15537</a>



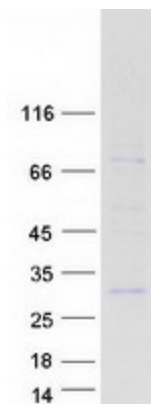
[View online »](#)

**Cytogenetics:** Xp22.13

**Summary:** This gene encodes an extracellular protein that plays a crucial role in the cellular organization of the retina. The encoded protein is assembled and secreted from photoreceptors and bipolar cells as a homo-oligomeric protein complex. Mutations in this gene are responsible for X-linked retinoschisis, a common, early-onset macular degeneration in males that results in a splitting of the inner layers of the retina and severe loss in vision. [provided by RefSeq, Oct 2008]

**Protein Families:** Secreted Protein

### Product images:



Coomassie blue staining of purified RS1 protein (Cat# [TP314267]). The protein was produced from HEK293T cells transfected with RS1 cDNA clone (Cat# [RC214267]) using MegaTran 2.0 (Cat# [TT210002]).