

## Product datasheet for PH314156

### Bestrophin (BEST1) (NM\_004183) Human Mass Spec Standard

#### Product data:

|                                       |   |
|---------------------------------------|---|
| Product Type:                         | Mass Spec Standards   |
| Description:                          | BEST1 MS Standard C13 and N15-labeled recombinant protein (NP_004174) |
| Species:                              | Human   |
| Expression Host:                      | HEK293  |
| Expression cDNA Clone or AA Sequence: | RC214156  |
| Predicted MW:                         | 67.5 kDa  |
| Protein Sequence:                     | >RC214156 representing NM_004183<br>Red=Cloning site Green=Tags(s)    |

MTITYTSQVANARLGSFSRLLLLCWRGSIYKLLYGEFLIFLLCYIIRFIYRLALTEEQQLMFEKLTLYCD  
SYIQLIPISFVLGFYVTLVVTRWWNQYENLPWPDRMLSLVSGFVEGKDEQGRLLRRTLIRYANLGNVLI  
RSVSTAVYKRFPQAHLVQAGFMTPAEHKLEKLSLPHNMFVWPVWFANLSMKAWLGGRIRDPILLQSL  
LNEMNLTQTQCGHLYAYDWISIPLVYTQVVTVAVYSFFLTCLVGRQFLNPAKAYPGHELDLVVPVFTFLQ  
FFFYVWGLKVAEQLINPFGEDDDDFETNWI VDRNLQVSL LAVDEM HQDLPRMEPDMYWNKPEPQPPYTA  
SAQFRRASFMGSTFNISLNKEEMEFQPNQEDEDAHAGIIGRFLGLQSHDHHPPRANSRTKLLWPKRESL  
LHEGLPKNHKAAKQNVRGQEDNKAWKLVKAVDAFKSAPLYQRPGYYSAPQTPLSPTPMFFPLEPSAPSKLH  
SVTGIDTKDKSLKTVSSGAKKSFELLSESDGALMEHPEVSQVRRKTVFNL TDMPEIPENHLKEPLEQSP  
TNIHTTLKDHMDPYWALENRDEAHS

TRTRPLEQKLI SEEDLAANDILDYKDDDDKV

|                  |  |
|------------------|--|
| Tag:             | C-Myc/DDK  |
| Purity:          | > 80% as determined by SDS-PAGE and Coomassie blue staining  |
| Concentration:   | >0.05 µg/µL as determined by microplate BCA method   |
| Labeling Method: | Labeled with [U- <sup>13</sup> C <sub>6</sub> , <sup>15</sup> N <sub>4</sub> ]-L-Arginine and [U- <sup>13</sup> C <sub>6</sub> , <sup>15</sup> N <sub>2</sub> ]-L-Lysine |
| Buffer:          | 25 mM Tris-HCl, 100 mM glycine, pH 7.3   |
| Storage:         | Store at -80°C. Avoid repeated freeze-thaw cycles.   |
| Stability:       | Stable for 3 months from receipt of products under proper storage and handling conditions.   |
| RefSeq:          | <a href="#">NP_004174</a>  |
| RefSeq Size:     | 2673   |
| RefSeq ORF:      | 1755   |



[View online »](#)

**Synonyms:** ARB; BEST; Best1V1Delta2; BMD; RP50; TU15B; VMD2

**Locus ID:** 7439

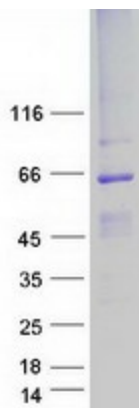
**UniProt ID:** [O76090](#)

**Cytogenetics:** 11q12.3

**Summary:** This gene encodes a member of the bestrophin gene family. This small gene family is characterized by proteins with a highly conserved N-terminus with four to six transmembrane domains. Bestrophins may form chloride ion channels or may regulate voltage-gated L-type calcium-ion channels. Bestrophins are generally believed to form calcium-activated chloride-ion channels in epithelial cells but they have also been shown to be highly permeable to bicarbonate ion transport in retinal tissue. Mutations in this gene are responsible for juvenile-onset vitelliform macular dystrophy (VMD2), also known as Best macular dystrophy, in addition to adult-onset vitelliform macular dystrophy (AVMD) and other retinopathies. Alternative splicing results in multiple variants encoding distinct isoforms. [provided by RefSeq, Nov 2008]

**Protein Families:** Druggable Genome, Ion Channels: Other, Transmembrane

### Product images:



Coomassie blue staining of purified BEST1 protein (Cat# [TP314156]). The protein was produced from HEK293T cells transfected with BEST1 cDNA clone (Cat# [RC214156]) using MegaTran 2.0 (Cat# [TT210002]).