

## Product datasheet for PH314135

### CA6 (NM\_001215) Human Mass Spec Standard

#### Product data:

Product Type:	Mass Spec Standards
Description:	CA6 MS Standard C13 and N15-labeled recombinant protein (NP_001206)
Species:	Human
Expression Host:	HEK293
Expression cDNA Clone or AA Sequence:	RC214135
Predicted MW:	35.37 kDa
Protein Sequence:	>RC214135 representing NM_001215 <b>Red</b> =Cloning site <b>Green</b> =Tags(s)  MRALVLLLSLFLGGQAQHVSDWTYSEGALDEAHWPQHYPACGGQRQSPINLQRTKVRYNPSLKGLNMTG YETQAGEFPMVNNGHTVQISLPSTMRMTVADGTVYIAQQMHFWGGASSEISGSEHTVDGIRHVIEIHIV HYSKYKSYDIAQDAPDGLAVLAAFVEVKNPENTYYSNFISHLANIKYPGQRTTLTGLDVQDMLPRNLQ HYTYHGSLTTPPCTENVHWFVLADFVKLSRTQVWKLENSLLDHRNKTIHNDYRRTQPLNHRVVESNFPN QEYTLGSEFQFYLHKIEEILDYLRRALN  <b>TRTRPLEQKLISEEDLAANDILDYKDDDDKV</b>
Tag:	C-Myc/DDK
Purity:	> 80% as determined by SDS-PAGE and Coomassie blue staining
Concentration:	>0.05 µg/µL as determined by microplate BCA method
Labeling Method:	Labeled with [U- <sup>13</sup> C <sub>6</sub> , <sup>15</sup> N <sub>4</sub> ]-L-Arginine and [U- <sup>13</sup> C <sub>6</sub> , <sup>15</sup> N <sub>2</sub> ]-L-Lysine
Buffer:	25 mM Tris-HCl, 100 mM glycine, pH 7.3
Storage:	Store at -80°C. Avoid repeated freeze-thaw cycles.
Stability:	Stable for 3 months from receipt of products under proper storage and handling conditions.
RefSeq:	<u><a href="#">NP_001206</a></u>
RefSeq Size:	1339
RefSeq ORF:	924
Synonyms:	CA-VI; GUSTIN
Locus ID:	765



[View online »](#)

UniProt ID: [P23280](#), [B4DUH8](#)

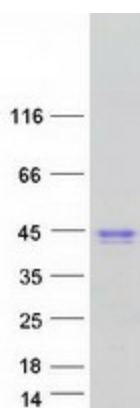
Cytogenetics: 1p36.23

Summary: The protein encoded by this gene is one of several isozymes of carbonic anhydrase. This protein is found only in salivary glands and saliva and protein may play a role in the reversible hydration of carbon dioxide though its function in saliva is unknown. [provided by RefSeq, Jul 2008]

Protein Families: Druggable Genome, Secreted Protein

Protein Pathways: Nitrogen metabolism

### Product images:



Coomassie blue staining of purified CA6 protein (Cat# [TP314135]). The protein was produced from HEK293T cells transfected with CA6 cDNA clone (Cat# [RC214135]) using MegaTran 2.0 (Cat# [TT210002]).