

Product datasheet for PH314066

MAGED2 (NM_201222) Human Mass Spec Standard

Product data:

Product Type:	Mass Spec Standards
Description:	MAGED2 MS Standard C13 and N15-labeled recombinant protein (NP_957516)
Species:	Human
Expression Host:	HEK293
Expression cDNA Clone or AA Sequence:	RC214066
Predicted MW:	65 kDa
Protein Sequence:	>RC214066 protein sequence Red =Cloning site Green =Tags(s)

MSDTSESAGLTRFQAEASEKDSMMQTLLTVTQNVETPKASKALEVSEDVKVSKASGVSKATEVS
 KTPEAREAPATQASSTTQLTDTQVLAENKSLAADTKKQADPQAVTMPATETKKVSHVADTKVNTKAQE
 TEAAPSQAPADEPEPESAAAQSQENQDTRPKVKAKKARKVKHLDGEEDGSSDQSQASGTTGGRRVSKALM
 ASMARRASRGPIAFWARRASRTRLAAWARRALLSLRSPKARRGKARRRAAKLQSSQEPEAPPPRDVALLQ
 GRANDLVKYLAKDQTKIPIKRSMDLKDIKEYTDVYPEIIRAGYSLEKVFQGIQKEIDKNDHLYILLS
 TLEPTDAGILGTTKDSPLGLLMVLLSIIFMNGNRSSEAVIWEVLRKGLRPGIHHSLFGDVKKLITDEF
 VKQKYLDYARVPNSNPPEYEFFWGLRSYETSKMKVLKFACKVQKKDPKEWAAQYREAMEADLKAAAEAA
 AEAKARAEIRARMGIGLSENAAGPCNWDEADIGPWAKARIQAGAEAKAKAQESGASTGASTSTNNSAS
 ASASTSGGF SAGASLTATLTFGLFAGLGGAGASTSGSSGACGFSYK

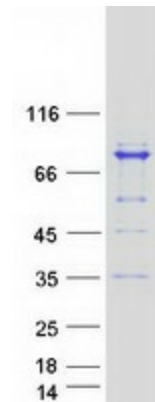
TRTRPLEQKLISEEDLAANDILDYKDDDDKV

Tag:	C-Myc/DDK
Purity:	> 80% as determined by SDS-PAGE and Coomassie blue staining
Concentration:	>0.05 µg/µL as determined by microplate BCA method
Labeling Method:	Labeled with [U- ¹³ C ₆ , ¹⁵ N ₄]-L-Arginine and [U- ¹³ C ₆ , ¹⁵ N ₂]-L-Lysine
Buffer:	25 mM Tris-HCl, 100 mM glycine, pH 7.3
Storage:	Store at -80°C. Avoid repeated freeze-thaw cycles.
Stability:	Stable for 3 months from receipt of products under proper storage and handling conditions.
RefSeq:	NP_957516
RefSeq Size:	2176
RefSeq ORF:	1818


[View online »](#)

Synonyms:	11B6; BARTS5; BCG-1; BCG1; HCA10; MAGE-D2
Locus ID:	10916
UniProt ID:	Q9UNF1 , A0A024R9Y7
Cytogenetics:	Xp11.21
Summary:	This gene is a member of the MAGED gene family. The MAGED genes are clustered on chromosome Xp11. This gene is located in Xp11.2, a hot spot for X-linked intellectual disability (XLID). Mutations in this gene cause a form of transient antenatal Bartter's syndrome. This gene may also be involved in several types of cancer, including breast cancer and melanoma. The protein encoded by this gene is progressively recruited from the cytoplasm to the nucleoplasm during the interphase and after nucleolar stress and is thus thought to play a role in cell cycle regulation. Alternative splicing results in multiple transcript variants. [provided by RefSeq, Jul 2017]

Product images:



Coomassie blue staining of purified MAGED2 protein (Cat# [TP314066]). The protein was produced from HEK293T cells transfected with MAGED2 cDNA clone (Cat# [RC214066]) using MegaTran 2.0 (Cat# [TT210002]).