

Product datasheet for PH314038

EMILIN2 (NM_032048) Human Mass Spec Standard

Product data:

Product Type:	Mass Spec Standards
Description:	EMILIN2 MS Standard C13 and N15-labeled recombinant protein (NP_114437)
Species:	Human
Expression Host:	HEK293
Expression cDNA Clone or AA Sequence:	RC214038
Predicted MW:	115.5 kDa
Protein Sequence:	>RC214038 representing NM_032048 Red=Cloning site Green=Tags(s)

MWQPRRPWPRVPWRWALALLALVGAGLCHAGPQPGYPARPSARNKNWCAYIVNKNVSCSVLEGSESEFIQA
QYNCAWNQMPCPSALVYRVNFRPRYVTRYKTVTQLEWRCCPGFRGGDCQEGPKDPVKTLRPTPARPRNSL
KKATDNEPSQFSEPRKTLSPGTGAQPSWGVDPKEGPQELQEKKIQVLEEKVLRRLTRTVLQSSLAGVSE
NLKHATQDDASRTRAPGLSSQHPKPDTTVSGDTEGQSPGVFNTKESGMKDIKSELAEVKDTLKNKSDKL
EELDGKVKGYEGLRQLQEAQGPVTMTNELYQAYVDSKIDALREELMEGMDRKLADLKNKSCYKLTG
LQQQCDDYGSYLVGIELIGEKETSLRKEINLRARLQEPSAQANCCDSEKNGDIGQIKTLQKIERVA
EATRMLNGRLDNEFDRLIVPEPDVDFDAKWNELDARINVTEKNAEEHCFYIEETLRGAINGEVGDLKQLV
DQKIQSLEDRLGSVLLQMTNNTGAELSPPGAAALPGVSGSGDERVMMELNHLKDKVQVVEDICLLNIQGGK
PHGMEGALPNREDRAVRDSLHLLKSLNDTMHRKFQETEQTIQKLQQDFSLYQLNHTENDVTHLQKEMS
NCRAGENAGMGRFTKVGEQERTVDTLPSQHPVAHCCSQLEERWQRLQSQVISELDACKECTQGGVQREVS
MVEGRVSHMEKTCCKLDSISGNLQRIKEGLNKHVSSLWNCVVRQMNGTLRSHSRDISGLKNSVQQFYSHVF
QISTDLQDLVKFQPSAKAPSPPPPAEAPKEPLQPEPAPPRPSGPATAEDPGRRPVLQRPPEERPPQPPG
STGVIAETGQAGPPAGAGVSGRGLPRGVDGQTGSGTVPGAEGFAGAPGYPKSPPVASPGAPVPSLVSFSA
GLTQKPFPSDGGVVLFNKVLVNDGDVYNPSTGVFTAPYDGRYLITATLTPERDAYVEAVLSVSNASVAQL
HTAGYRREFLEYHRPPGALHTCGGPGAFHLIVHLKAGDAVNVVVTGGKLAHTDFDEMYSYTFSGVFLYPFL
SHL

TRTRPLEQKLISEEDLAANDILDYKDDDDKV

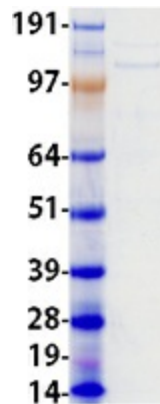
Tag:	C-Myc/DDK
Purity:	> 80% as determined by SDS-PAGE and Coomassie blue staining
Concentration:	>0.05 µg/µL as determined by microplate BCA method
Labeling Method:	Labeled with [U- ¹³ C ₆ , ¹⁵ N ₄]-L-Arginine and [U- ¹³ C ₆ , ¹⁵ N ₂]-L-Lysine
Buffer:	25 mM Tris-HCl, 100 mM glycine, pH 7.3



[View online »](#)

Storage:	Store at -80°C. Avoid repeated freeze-thaw cycles.
Stability:	Stable for 3 months from receipt of products under proper storage and handling conditions.
RefSeq:	NP_114437
RefSeq Size:	4009
RefSeq ORF:	3159
Synonyms:	EMILIN-2; FOAP-10
Locus ID:	84034
UniProt ID:	Q9BXX0
Cytogenetics:	18p11.32-p11.31
Summary:	May be responsible for anchoring smooth muscle cells to elastic fibers, and may be involved not only in the formation of the elastic fiber, but also in the processes that regulate vessel assembly. Has cell adhesive capacity.[UniProtKB/Swiss-Prot Function]

Product images:



Coomassie blue staining of purified EMILIN2 protein (Cat# [TP314038]). The protein was produced from HEK293T cells transfected with EMILIN2 cDNA clone (Cat# [RC214038]) using MegaTran 2.0 (Cat# [TT210002]).