

Product datasheet for PH314027

TBCE (NM_001079515) Human Mass Spec Standard

Product data:

Product Type:	Mass Spec Standards
Description:	TBCE MS Standard C13 and N15-labeled recombinant protein (NP_001072983)
Species:	Human
Expression Host:	HEK293
Expression cDNA Clone or AA Sequence:	RC214027
Predicted MW:	59.3 kDa
Protein Sequence:	>RC214027 protein sequence Red=Cloning site Green=Tags(s)

MSDTLTADVIGRRVEVNGEHATVRFAGVPPVAGPWLGVWDNPERGKHGDSHEGTYYFKCRHPTGGFSI
RPNKVNFGTDFLTAIKNRYVLEDGPEEDRKEQIVTIGNKPVETIGFDSIMKQQSQLSKLQEVSLRNCVAVS
CAGEKGGVAEACPNIRKVDLSKNLLSSWDEVIIHADQLRHLEVLNVSENKLFPSGSVLTGTLVSLKVLV
LNQTGITWAEVLRVAGCPGLEELYLESNNIFISERPTDVLQTVKLLDLSSNQLIDENQLYLIAHLPRLE
QLILSDTGISSLHFPDAGIGCKTSMFPSLKYLVVNDNQISQWSFFNELEKLPALRALSCLRNPLTKEDKE
AETARLLIIASIGQLKTLNKCEILPEERRRAELDYRKAFGNEWKQAGGHKDPEKNRNLSEEFHTAHPRYQF
LCLKYGAPEDWELKTQQPLMLKNQLLTLKIKYPHQLDQKQVLEKQLPGSMTIQKVKGLLSRLKVPVSDLL
LSYESPKKPGREIELENDLKSQFYSVENGDCLLVRW

TRTRPLEQKLISEEDLAANDILDYKDDDDKV

Tag:	C-Myc/DDK
Purity:	> 80% as determined by SDS-PAGE and Coomassie blue staining
Concentration:	>0.05 µg/µL as determined by microplate BCA method
Labeling Method:	Labeled with [U- 13C6, 15N4]-L-Arginine and [U- 13C6, 15N2]-L-Lysine
Buffer:	25 mM Tris-HCl, 100 mM glycine, pH 7.3
Storage:	Store at -80°C. Avoid repeated freeze-thaw cycles.
Stability:	Stable for 3 months from receipt of products under proper storage and handling conditions.
RefSeq:	NP_001072983
RefSeq Size:	2025
RefSeq ORF:	1581



[View online »](#)

Synonyms: HRD; KCS; KCS1; pac2; PEAMO

Locus ID: 6905

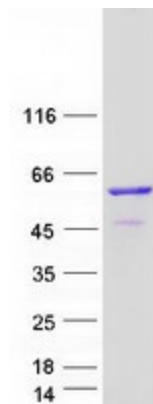
UniProt ID: [Q15813](#)

Cytogenetics: 1q42.3

Summary: Cofactor E is one of four proteins (cofactors A, D, E, and C) involved in the pathway leading to correctly folded beta-tubulin from folding intermediates. Cofactors A and D are believed to play a role in capturing and stabilizing beta-tubulin intermediates in a quasi-native confirmation. Cofactor E binds to the cofactor D/beta-tubulin complex; interaction with cofactor C then causes the release of beta-tubulin polypeptides that are committed to the native state. Two transcript variants encoding the same protein have been found for this gene. [provided by RefSeq, Jul 2008]

Protein Families: Druggable Genome

Product images:



Coomassie blue staining of purified TBCE protein (Cat# [TP314027]). The protein was produced from HEK293T cells transfected with TBCE cDNA clone (Cat# [RC214027]) using MegaTran 2.0 (Cat# [TT210002]).