

Product datasheet for PH313993

ATPase Inhibitory Factor 1 (ATPIF1) (NM_178191) Human Mass Spec Standard

Product data:

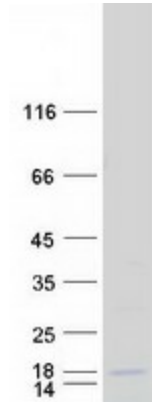
Product Type:	Mass Spec Standards
Description:	ATPIF1 MS Standard C13 and N15-labeled recombinant protein (NP_835498)
Species:	Human
Expression Host:	HEK293
Expression cDNA Clone or AA Sequence:	RC213993
Predicted MW:	3.8 kDa
Protein Sequence:	>RC213993 representing NM_178191 Red=Cloning site Green=Tags(s) MAVTALAARTWLGWGVRTMQARGFGSDQSENVDRGAGSIREAGGAFGKREQAEEERYFR TRTRPLEQKLISEEDLAANDILDYKDDDDKV
Tag:	C-Myc/DDK
Purity:	> 80% as determined by SDS-PAGE and Coomassie blue staining
Concentration:	>0.05 µg/µL as determined by microplate BCA method
Labeling Method:	Labeled with [U- 13C6, 15N4]-L-Arginine and [U- 13C6, 15N2]-L-Lysine
Buffer:	25 mM Tris-HCl, 100 mM glycine, pH 7.3
Storage:	Store at -80°C. Avoid repeated freeze-thaw cycles.
Stability:	Stable for 3 months from receipt of products under proper storage and handling conditions.
RefSeq:	NP_835498
RefSeq Size:	1929
RefSeq ORF:	180
Synonyms:	ATPI; ATPIF1; ATPIP; IP
Locus ID:	93974
UniProt ID:	Q9UII2
Cytogenetics:	1p35.3



[View online »](#)

Summary:

This gene encodes a mitochondrial ATPase inhibitor. Alternative splicing occurs at this locus and three transcript variants encoding distinct isoforms have been identified. [provided by RefSeq, Jul 2008]

Product images:

Coomassie blue staining of purified ATP5IF1 protein (Cat# [TP313993]). The protein was produced from HEK293T cells transfected with ATP5IF1 cDNA clone (Cat# [RC213993]) using MegaTran 2.0 (Cat# [TT210002]).