

Product datasheet for PH313959

Macrophage Inflammatory Protein 1 beta (CCL4L2) (NM_001001435) Human Mass Spec Standard

Product data:

Product Type:	Mass Spec Standards
Description:	CCL4L1 MS Standard C13 and N15-labeled recombinant protein (NP_001001435)
Species:	Human
Expression Host:	HEK293
Expression cDNA Clone or AA Sequence:	RC213959
Predicted MW:	10.1 kDa
Protein Sequence:	>RC213959 protein sequence Red=Cloning site Green=Tags(s) MKLCVTYLSLLVLVAAFCSLALSAPMGSDPPTACCFSTARKLPHNFVVDYYETSSLCSQPAVVFQTKRG KQVCADPSESQWQYVYDLELN TRTRPLEQKLISEEDLAANDILDYKDDDDKV
Tag:	C-Myc/DDK
Purity:	> 80% as determined by SDS-PAGE and Coomassie blue staining
Concentration:	>0.05 µg/µL as determined by microplate BCA method
Labeling Method:	Labeled with [U- ¹³ C ₆ , ¹⁵ N ₄]-L-Arginine and [U- ¹³ C ₆ , ¹⁵ N ₂]-L-Lysine
Buffer:	25 mM Tris-HCl, 100 mM glycine, pH 7.3
Storage:	Store at -80°C. Avoid repeated freeze-thaw cycles.
Stability:	Stable for 3 months from receipt of products under proper storage and handling conditions.
RefSeq:	NP_001001435
RefSeq Size:	674
RefSeq ORF:	276
Synonyms:	AT744.2; CCL4L; LAG-1; LAG1; SCYA4L
Locus ID:	9560
UniProt ID:	Q8NHW4



[View online »](#)

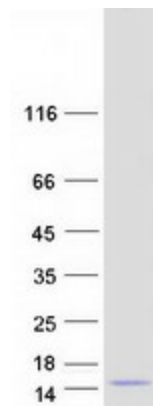
Cytogenetics: 17q12

Summary: This gene is one of several cytokine genes that are clustered on the q-arm of chromosome 17. Cytokines are a family of secreted proteins that function in inflammatory and immunoregulatory processes. The protein encoded by this family member is similar to the chemokine (C-C motif) ligand 4 product, which inhibits HIV entry by binding to the cellular receptor CCR5. The copy number of this gene varies among individuals, where most individuals have one to five copies. This gene copy contains a non-consensus splice acceptor site at the 3' terminal exon found in other highly similar gene copies, and it thus uses other alternative splice sites for the 3' terminal exon, resulting in multiple transcript variants. [provided by RefSeq, Apr 2014]

Protein Families: Druggable Genome, Transmembrane

Protein Pathways: Chemokine signaling pathway, Cytokine-cytokine receptor interaction, Cytosolic DNA-sensing pathway

Product images:



Coomassie blue staining of purified CCL4L1 protein (Cat# [TP313959]). The protein was produced from HEK293T cells transfected with CCL4L1 cDNA clone (Cat# [RC213959]) using MegaTran 2.0 (Cat# [TT210002]).