

Product datasheet for PH313934

VT11A (NM_145206) Human Mass Spec Standard

Product data:

Product Type:	Mass Spec Standards
Description:	VT11A MS Standard C13 and N15-labeled recombinant protein (NP_660207)
Species:	Human
Expression Host:	HEK293
Expression cDNA Clone or AA Sequence:	RC213934
Predicted MW:	25 kDa
Protein Sequence:	>RC213934 representing NM_145206 Red=Cloning site Green=Tags(s) MSSDFEGYEQDFAVLTAEITSKIARVPRLPPDEKKQMVANVEKQLEEAKEELLEQMDLEVREIPQSRGMY SNRMRSYKQEMGKLETDFKRSRIAYSDEVNELLGDDGNSENQRAHLLDNTERLERSRRLEAGYQIAV ETEIQIQEMLENLSHDREKIQRARERLRETDANLGKSSRILTGMLRRIIQNRILLVILGIIVVITILMAI TFSVRRH TRTRPLEQKLI SEEDLAANDILDYKDDDDKV
Tag:	C-Myc/DDK
Purity:	> 80% as determined by SDS-PAGE and Coomassie blue staining
Concentration:	>0.05 µg/µL as determined by microplate BCA method
Labeling Method:	Labeled with [U- 13C6, 15N4]-L-Arginine and [U- 13C6, 15N2]-L-Lysine
Buffer:	25 mM Tris-HCl, 100 mM glycine, pH 7.3
Storage:	Store at -80°C. Avoid repeated freeze-thaw cycles.
Stability:	Stable for 3 months from receipt of products under proper storage and handling conditions.
RefSeq:	NP_660207
RefSeq Size:	4401
RefSeq ORF:	651
Synonyms:	MMDS3; MVti1; Vti1-rp2; VT11RP2
Locus ID:	143187
UniProt ID:	Q96AJ9



[View online »](#)

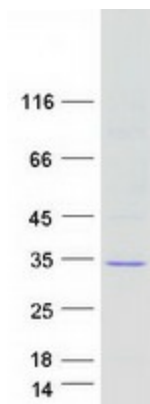
Cytogenetics: 10q25.2

Summary: The protein encoded by this gene is a member of the family of soluble N-ethylmaleimide-sensitive fusion protein-attachment protein receptors (SNAREs) that function in intracellular trafficking. This family member is involved in vesicular transport between endosomes and the trans-Golgi network. It is a vesicle-associated SNARE (v-SNARE) that interacts with target membrane SNAREs (t-SNAREs). Polymorphisms in this gene have been associated with binocular function, and also with susceptibility to colorectal and lung cancers. A recurrent rearrangement has been found between this gene and the transcription factor 7-like 2 (TCF7L2) gene in colorectal cancers. Alternative splicing results in multiple transcript variants. [provided by RefSeq, Dec 2015]

Protein Families: Transmembrane

Protein Pathways: SNARE interactions in vesicular transport

Product images:



Coomassie blue staining of purified VTI1A protein (Cat# [TP313934]). The protein was produced from HEK293T cells transfected with VTI1A cDNA clone (Cat# [RC213934]) using MegaTran 2.0 (Cat# [TT210002]).