

Product datasheet for PH313932

SERPINB10 (NM_005024) Human Mass Spec Standard

Product data:

Product Type:	Mass Spec Standards
Description:	SERPINB10 MS Standard C13 and N15-labeled recombinant protein (NP_005015)
Species:	Human
Expression Host:	HEK293
Expression cDNA Clone or AA Sequence:	RC213932
Predicted MW:	45.4 kDa
Protein Sequence:	>RC213932 protein sequence Red =Cloning site Green =Tags(s)

MDSLATSINQFALELSKKLAESAQGKNIFFSSWSISTSLTIVYLGAKGTTAAQMAQVLQFNDRDQGVKCDP
 ESEKKRKMEFNLSNSEEIHSDFQTLISEILKPNDYLLKTANAIYGEKTYAFHNKYLEDKTYFGAEPQP
 VNFVEASDQIRKDINSWVERQTEGKIQNLLPDDSVSTTRMILVNALYFKGIWEHQFLVQNTTEKPFPRIN
 ETTSKPVQMMFMKKKLHIFHIEKPAVGLQLYYKSRDLSLLILLPEDINGLEQLEKAITYEKLNWTSAD
 MMELYEVQLHLPKFKLESDYDLKSTLSSMGMSDAFSQSKADFSGMSSARNLFLSNVFHKAFVEINEQGTE
 AAAGSGSEINIRVPSIEFNANHPFLFFIRHNKTNTILFYGRLCSP

TRTRPLEQKLISEEDLAANDILDYKDDDDKV

Tag:	C-Myc/DDK
Purity:	> 80% as determined by SDS-PAGE and Coomassie blue staining
Concentration:	>0.05 µg/µL as determined by microplate BCA method
Labeling Method:	Labeled with [U- ¹³ C ₆ , ¹⁵ N ₄]-L-Arginine and [U- ¹³ C ₆ , ¹⁵ N ₂]-L-Lysine
Buffer:	25 mM Tris-HCl, 100 mM glycine, pH 7.3
Storage:	Store at -80°C. Avoid repeated freeze-thaw cycles.
Stability:	Stable for 3 months from receipt of products under proper storage and handling conditions.
RefSeq:	<u>NP_005015</u>
RefSeq Size:	1194
RefSeq ORF:	1192
Synonyms:	PI-10; PI10
Locus ID:	5273


[View online »](#)

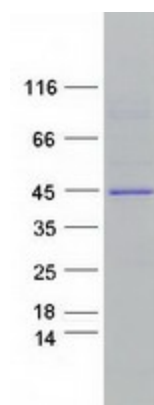
UniProt ID: [P48595](#), [B2RC45](#)

Cytogenetics: 18q22.1

Summary: This gene is a member of the serpin peptidase inhibitor, clade B family and is found in a cluster of other similar genes on chromosome 18. The protein encoded by this gene appears to help control the regulation of protease functions during hematopoiesis. Variations in this gene may increase the risk of prostate cancer. [provided by RefSeq, Dec 2015]

Protein Families: Druggable Genome

Product images:



Coomassie blue staining of purified SERPINB10 protein (Cat# [TP313932]). The protein was produced from HEK293T cells transfected with SERPINB10 cDNA clone (Cat# [RC213932]) using MegaTran 2.0 (Cat# [TT210002]).