

Product datasheet for PH313926

Dystrophin (DMD) (NM_004021) Human Mass Spec Standard

Product data:

| | |
|---------------------------------------|---|
| Product Type: | Mass Spec Standards |
| Description: | DMD MS Standard C13 and N15-labeled recombinant protein (NP_004012) |
| Species: | Human |
| Expression Host: | HEK293 |
| Expression cDNA Clone or AA Sequence: | RC213926 |
| Predicted MW: | 143.6 kDa |
| Protein Sequence: | >RC213926 representing NM_004021 Red=Cloning site Green=Tags(s) |

MPSSLMLEVPALADFNRAWTELTDWLSLLDQVIKSQRVMVGDLEDINEMI IKQKATMQDLEQRRPQLEEL
ITAAQNLKNKTSNQEARTIITDRIERI QNQWDEVQEHLQNRQQLNEMLKDSTQWLEAKEEAEQVLGQAR
AKLESWKEGPTYVD AIQKKITETKQLAKDLRQWQTNVDVANDLALKLLRDYSADDTRKVMITENINASW
RSIHKRVSEREAAL EETHRLLQQFPLDLEKFLAWL TEAETTANVLQDATRKERLLED SKGVKELMKQWQD
LQGEIEAHTDVVYHNL DENSQKILRSLEGSDDAVLLQRRLDNMNFKWSSEL RKKSLNIRSHLEASSDQWKRL
HLSLQELLVWLQLKDEL SRQAPIGGDFPAVQKQNDVHRAFKRELKTKEPVIMSTLETVRIFL TEQPLEG
LEKLYQEPREL PPEERAQNVTRLLRQKAEVNTWEKLNLSADWQRKIDETLERLQELQEATDEL DLKL
RQAEVIKGSWQPVGDLLIDSLQDHLEKVKALRGEIAPLKENVSHVNDLARQLTTLGIQLSPYNLSTLEDL
NTRWKLQVAVEDRVRQLHEAHRDFGPASQHFLLSTSVQGPWERAISP NKVPYYINHETQTTCWDHPKMTE
LYQSLADLNNVRF SAYRTAMKLRRLQKALCLDLLSL SAACDALDQHNLKQNDQPMIDLI INCLTTIYDR
LEQEHNNLVNVPLCVDMCLNWL LNVDYDTGRTGRIRVLSFKTGIISLCKAHLEDKYRYL FKQVASSTGFCD
QRRLLGLLLHDSIQIPRQLGEVASF GGSNI EPSVRSCFQFANNKPEIEAALFDWMRLEPQSMVWLPVLR
VAAAETAKHQAKNICKECPIIGFRYRSLKHFNYD ICQSCFFSGRVAKGHKMHPMVEYCTPTTSGEDVR
DFAKVLKNKFRTRKRYFAKHPRMGYLPVQTVLEGDNMTPVTLINFWPVSAPASSPQLSHDDTHSRIEHY
ASRLAEMENSGSYLNDISPNESIDDEHLLIQHYCQSLNQDSPLSQPRSPAQILISLESEERGERIL
ADLEENRNLQAEYDRLKQQHEHKGLSPLSPPEMMPTSPQSPRDAELIAEAKLLRQHKGRLEARMQILE
DHNKQLESQHLRRLRQLLEQPQAEAKVNGTTVSSPSTSLQRSQSSQPMLLRVVGSTSDSMGEEDLLSPPQ
DTSTGLEEVMEQLNNSFPSSRGHNVGS LFMADDLGRAMESLVSVMTDEEGAE

TRTRPLEQKLISEEDLAANDILDYKDDDDKV

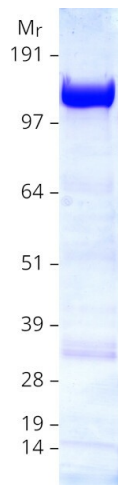
| | |
|------------------|--|
| Tag: | C-Myc/DDK |
| Purity: | > 80% as determined by SDS-PAGE and Coomassie blue staining |
| Concentration: | >0.05 µg/µL as determined by microplate BCA method |
| Labeling Method: | Labeled with [U- ¹³ C ₆ , ¹⁵ N ₄]-L-Arginine and [U- ¹³ C ₆ , ¹⁵ N ₂]-L-Lysine |



[View online »](#)

| | |
|-------------------|--|
| Buffer: | 25 mM Tris-HCl, 100 mM glycine, pH 7.3 |
| Storage: | Store at -80°C. Avoid repeated freeze-thaw cycles. |
| Stability: | Stable for 3 months from receipt of products under proper storage and handling conditions. |
| RefSeq: | NP_004012 |
| RefSeq Size: | 7378 |
| RefSeq ORF: | 3729 |
| Synonyms: | BMD; CMD3B; DXS142; DXS164; DXS206; DXS230; DXS239; DXS268; DXS269; DXS270; DXS272; MRX85 |
| Locus ID: | 1756 |
| UniProt ID: | P11532 , A7E212 |
| Cytogenetics: | Xp21.2-p21.1 |
| Summary: | This gene spans a genomic range of greater than 2 Mb and encodes a large protein containing an N-terminal actin-binding domain and multiple spectrin repeats. The encoded protein forms a component of the dystrophin-glycoprotein complex (DGC), which bridges the inner cytoskeleton and the extracellular matrix. Deletions, duplications, and point mutations at this gene locus may cause Duchenne muscular dystrophy (DMD), Becker muscular dystrophy (BMD), or cardiomyopathy. Alternative promoter usage and alternative splicing result in numerous distinct transcript variants and protein isoforms for this gene. [provided by RefSeq, Dec 2016] |
| Protein Pathways: | Arrhythmogenic right ventricular cardiomyopathy (ARVC), Dilated cardiomyopathy, Hypertrophic cardiomyopathy (HCM), Viral myocarditis |

Product images:



Coomassie blue staining of purified DMD protein (Cat# [TP313926]). The protein was produced from HEK293T cells transfected with DMD cDNA clone (Cat# [RC213926]) using MegaTran 2.0 (Cat# [TT210002]).