

Product datasheet for PH313873

TCP1 beta (CCT2) (NM_006431) Human Mass Spec Standard

Product data:

Product Type:	Mass Spec Standards
Description:	CCT2 MS Standard C13 and N15-labeled recombinant protein (NP_006422)
Species:	Human
Expression Host:	HEK293
Expression cDNA Clone or AA Sequence:	RC213873
Predicted MW:	57.5 kDa
Protein Sequence:	>RC213873 protein sequence Red=Cloning site Green=Tags(s)

MASLSLAPVNIKAGADEERAETARLTSFIGAIAIGDLVKSTLGPKGMDKILLSSGRDASLMVTNDGATI
LKNIGVDNPAKVLVDMSRVQDDEVGDGTTSVTVLAAELLREAESLIAKKIHPQTIIAGWREATKAAREA
LLSSAVDHGSDEVKFRQDLMNIAGTTLSSKLLTHHKDHFTKLAVEAVLRLKSGNLEAIIHIKKLGGSLA
DSYLDEGFLLDKKIGVNPQKRIENAKIL IANTGMDTDKIKIFGSRVRVDSTAKVAEIEHAEKEKMKKEVE
RILKHGINCFINRQLIYNYPEQLFGAAGVMAIEHADFAVERLALVTGGEIASTFDHPELVKLGSKLIE
EVMIGEDKLIHFSGVALGEACTIVLRGATQQILDEAERSLHDALCVLAQTVKDSRTVYGGCSEMLMAHA
VTQLANRTPGKEAVAMESYAKALRMLPTIIADNAGYDSADLVAQLRAAHSEGNTTAGLDMREGTIGDMAI
LGITESFQVKRQVLLSAAEAAEILRVDNIIKAAPRKRVPDHHPC

TRTRPLEQKLISEEDLAANDILDYKDDDDKV

Tag:	C-Myc/DDK
Purity:	> 80% as determined by SDS-PAGE and Coomassie blue staining
Concentration:	>0.05 µg/µL as determined by microplate BCA method
Labeling Method:	Labeled with [U- 13C6, 15N4]-L-Arginine and [U- 13C6, 15N2]-L-Lysine
Buffer:	25 mM Tris-HCl, 100 mM glycine, pH 7.3
Storage:	Store at -80°C. Avoid repeated freeze-thaw cycles.
Stability:	Stable for 3 months from receipt of products under proper storage and handling conditions.
RefSeq:	<u>NP_006422</u>
RefSeq Size:	1962
RefSeq ORF:	1605



[View online »](#)

Synonyms: 99D8.1; CCT-beta; CCTB; HEL-S-100n; PRO1633; TCP-1-beta

Locus ID: 10576

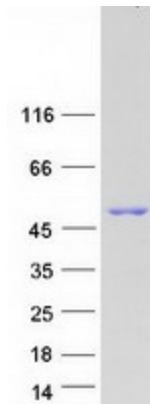
UniProt ID: [P78371](#), [V9HW96](#), [B7ZAT2](#)

Cytogenetics: 12q15

Summary: The protein encoded by this gene is a molecular chaperone that is a member of the chaperonin containing TCP1 complex (CCT), also known as the TCP1 ring complex (TRiC). This complex consists of two identical stacked rings, each containing eight different proteins. Unfolded polypeptides enter the central cavity of the complex and are folded in an ATP-dependent manner. The complex folds various proteins, including actin and tubulin. Two transcript variants encoding different isoforms have been found for this gene. [provided by RefSeq, Nov 2010]

Protein Families: Druggable Genome

Product images:



Coomassie blue staining of purified CCT2 protein (Cat# [TP313873]). The protein was produced from HEK293T cells transfected with CCT2 cDNA clone (Cat# [RC213873]) using MegaTran 2.0 (Cat# [TT210002]).