

Product datasheet for PH313868

MEK7 (MAP2K7) (NM_145185) Human Mass Spec Standard

Product data:

Product Type:	Mass Spec Standards
Description:	MAP2K7 MS Standard C13 and N15-labeled recombinant protein (NP_660186)
Species:	Human
Expression Host:	HEK293
Expression cDNA Clone or AA Sequence:	RC213868
Predicted MW:	47.3 kDa
Protein Sequence:	>RC213868 representing NM_145185 Red=Cloning site Green=Tags(s)

MAASSLEQKLSRLEAKLKQENREARRRIDLNLDISPQRPRPTLQLPLANDGGSRSPPSESSPQHPTPPAR
PRHMLGLPSTLFTPRSMESIEIDQKLQEIMKQTGYLTIGGQRYQAEINDLENLGEMSGTCGQVWKMFR
KTGHVIAVKQMRMSGNKEENKRILMDLDVVLKSHDCPYIVQCFGTFITNTDVFIAEMLMGTCAEKLKCRM
QGPIPERILGKMTVAIVKALYYLKEKHGVIHRDVKPSNILLDERGQIKLCDFGISGRLVDSKAKTRSAGC
AAYMAPERIDPPDPTKPDYDIRADVWSLGISLVELATGQFPYKNCKTDFEVLTKVLQEEPPLLPGHMGFS
GDFQSFVKDCLTKDHRKRPKYNKLEHSFIKRYETLEVDVASWFKDVMKTESPRTSGVLSPHLPFFR

TRTRPLEQKLISEEDLAANDILDYKDDDDKV

Tag:	C-Myc/DDK
Purity:	> 80% as determined by SDS-PAGE and Coomassie blue staining
Concentration:	>0.05 µg/µL as determined by microplate BCA method
Labeling Method:	Labeled with [U- ¹³ C ₆ , ¹⁵ N ₄]-L-Arginine and [U- ¹³ C ₆ , ¹⁵ N ₂]-L-Lysine
Buffer:	25 mM Tris-HCl, 100 mM glycine, pH 7.3
Storage:	Store at -80°C. Avoid repeated freeze-thaw cycles.
Stability:	Stable for 3 months from receipt of products under proper storage and handling conditions.
RefSeq:	<u>NP_660186</u>
RefSeq Size:	3386
RefSeq ORF:	1257
Synonyms:	JNKK2; MAPKK7; MEK; MEK 7; MKK7; PRKMK7; SAPKK-4; SAPKK4
Locus ID:	5609



[View online »](#)

UniProt ID: [O14733](#)

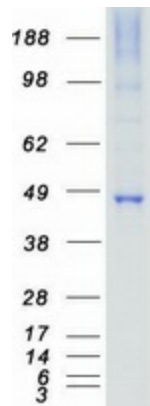
Cytogenetics: 19p13.2

Summary: The protein encoded by this gene is a dual specificity protein kinase that belongs to the MAP kinase kinase family. This kinase specifically activates MAPK8/JNK1 and MAPK9/JNK2, and this kinase itself is phosphorylated and activated by MAP kinase kinase kinases including MAP3K1/MEKK1, MAP3K2/MEKK2, MAP3K3/MEKK5, and MAP4K2/GCK. This kinase is involved in the signal transduction mediating the cell responses to proinflammatory cytokines, and environmental stresses. Alternative splicing results in multiple transcript variants. [provided by RefSeq, Jul 2014]

Protein Families: Druggable Genome, Protein Kinase

Protein Pathways: ErbB signaling pathway, Fc epsilon RI signaling pathway, GnRH signaling pathway, MAPK signaling pathway, Neurotrophin signaling pathway, T cell receptor signaling pathway, Toll-like receptor signaling pathway

Product images:



Coomassie blue staining of purified MAP2K7 protein (Cat# [TP313868]). The protein was produced from HEK293T cells transfected with MAP2K7 cDNA clone (Cat# [RC213868]) using MegaTran 2.0 (Cat# [TT210002]).