

Product datasheet for PH313843

Nesprin 2 (SYNE2) (NM_182910) Human Mass Spec Standard

Product data:

Product Type:	Mass Spec Standards
Description:	SYNE2 MS Standard C13 and N15-labeled recombinant protein (NP_878914)
Species:	Human
Expression Host:	HEK293
Expression cDNA Clone or AA Sequence:	RC213843
Predicted MW:	48 kDa
Protein Sequence:	>RC213843 representing NM_182910 Red=Cloning site Green=Tags(s)

MEGDRNVPPVPPASSTPYKPPYKLLLLPPGTDGGKEGPRVNLGNPQQEDGGLAGITEQQSGAFDRWEMIQ
AQELHNKLIKQNLQQLNSDISAITTWLKKTEAELEMLKMAKPPSDIQEIELRVKRLQEILKAFDITYKAL
VVSVNVSKEFLQTESPESTELQSRLRQLSLLWEAAQGAVDSWRGGLRQSLMQCQGSKTRPRSDVLFKFD
FHQLSQNLLLWLASAKNRRQKAHVTDPKADPRALLECRRELMQLEKELVERQPQVDMQEIISNLLIKGH
GEDCIEAEEKVHVIEKKLQQLREQVSDLMALQGTQNPASPLPSFDEVDSGDQPPATSVPAAPRAKFAVR
TTEGEEETESRVPGSTRPQRSFLSRVVRAALPLQLLLLLLLLLLACLPSSEEDYSCTQANNFARSFYPM
RYTNGPPPT

TRTRPLEQKLISEEDLAANDILDYKDDDDKV

Tag:	C-Myc/DDK
Purity:	> 80% as determined by SDS-PAGE and Coomassie blue staining
Concentration:	>0.05 µg/µL as determined by microplate BCA method
Labeling Method:	Labeled with [U- ¹³ C ₆ , ¹⁵ N ₄]-L-Arginine and [U- ¹³ C ₆ , ¹⁵ N ₂]-L-Lysine
Buffer:	25 mM Tris-HCl, 100 mM glycine, pH 7.3
Storage:	Store at -80°C. Avoid repeated freeze-thaw cycles.
Stability:	Stable for 3 months from receipt of products under proper storage and handling conditions.
RefSeq:	NP_878914
RefSeq Size:	3103
RefSeq ORF:	1287
Synonyms:	EDMD5; KASH2; Nesp2; Nesprin-2; NUA; NUANCE; SYNE-2; TROPH



[View online »](#)

Locus ID: 23224

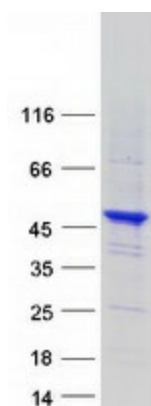
UniProt ID: [Q8WXH0](#)

Cytogenetics: 14q23.2

Summary: The protein encoded by this gene is a nuclear outer membrane protein that binds cytoplasmic F-actin. This binding tethers the nucleus to the cytoskeleton and aids in the maintenance of the structural integrity of the nucleus. Several transcript variants encoding different isoforms have been found for this gene. [provided by RefSeq, Mar 2009]

Protein Families: Druggable Genome, Transcription Factors

Product images:



Coomassie blue staining of purified SYNE2 protein (Cat# [TP313843]). The protein was produced from HEK293T cells transfected with SYNE2 cDNA clone (Cat# [RC213843]) using MegaTran 2.0 (Cat# [TT210002]).