

## Product datasheet for PH313842

### SNX20 (NM\_182854) Human Mass Spec Standard

#### Product data:

Product Type:	Mass Spec Standards
Description:	SNX20 MS Standard C13 and N15-labeled recombinant protein (NP_878274)
Species:	Human
Expression Host:	HEK293
Expression cDNA Clone or AA Sequence:	RC213842
Predicted MW:	36 kDa
Protein Sequence:	>RC213842 representing NM_182854 Red=Cloning site Green=Tags(s)  MASPEHPGSPGCMGPITQCTARTQQEAPATGPDLPHPGPDGHLDTSGLSNSSMTTRELQQYWQNQKCR WKHVKLLFEIASARIEERKVSQFVYQIIVIQTGSFDNNKAVLERRYSDFAKLQKALLKTFREEIEDVEF PRKHLTGNFAEEMICERRRALQEYLGLLYAIRCVRRSREFLDFLTRPELREAFGCLRAGQYPRALELLLR VLPLQEKLTAHCPAAAVPALCAVLLCHRDLDRPAEFAAGERALQRLQAREGHRYAPLLDAMVRLAYAL GKDFVTLQERLEESQLRRPTPRGITLKELTVREYLH  TRTRPLEQKLISEEDLAANDILDYKDDDDKV
Tag:	C-Myc/DDK
Purity:	> 80% as determined by SDS-PAGE and Coomassie blue staining
Concentration:	>0.05 µg/µL as determined by microplate BCA method
Labeling Method:	Labeled with [U- <sup>13</sup> C <sub>6</sub> , <sup>15</sup> N <sub>4</sub> ]-L-Arginine and [U- <sup>13</sup> C <sub>6</sub> , <sup>15</sup> N <sub>2</sub> ]-L-Lysine
Buffer:	25 mM Tris-HCl, 100 mM glycine, pH 7.3
Storage:	Store at -80°C. Avoid repeated freeze-thaw cycles.
Stability:	Stable for 3 months from receipt of products under proper storage and handling conditions.
RefSeq:	<a href="#">NP_878274</a>
RefSeq Size:	1457
RefSeq ORF:	948
Synonyms:	SLIC1
Locus ID:	124460



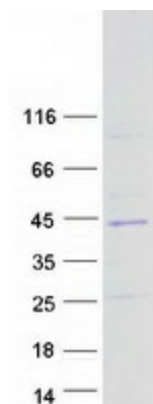
[View online »](#)

UniProt ID: [Q7Z614](#)

Cytogenetics: 16q12.1

Summary: SNX20 interacts with the cytoplasmic domain of PSGL1 (SELPLG; MIM 600738) and cycles PSGL1 into endosomes.[supplied by OMIM, Feb 2010]

### Product images:



Coomassie blue staining of purified SNX20 protein (Cat# [TP313842]). The protein was produced from HEK293T cells transfected with SNX20 cDNA clone (Cat# [RC213842]) using MegaTran 2.0 (Cat# [TT210002]).