

Product datasheet for PH313835

ATP2B4 (NM_001684) Human Mass Spec Standard

Product data:

Product Type:	Mass Spec Standards
Description:	ATP2B4 MS Standard C13 and N15-labeled recombinant protein (NP_001675)
Species:	Human
Expression Host:	HEK293
Expression cDNA Clone or AA Sequence:	RC213835
Predicted MW:	133.8 kDa
Protein Sequence:	>RC213835 representing NM_001684 Red=Cloning site Green=Tags(s)

MTNPSTRVLPANSMASREGDFGCTVMELRKLMELRSDALTQINVHYGGVQNLCSRKLTSPVEGLSGNP
ADLEKRRQVFGHNVIPPKPKTFLELVWEALQDVTLIILEIAAIIISLVSFYRPAGEENELCGQVATTPPE
DENEAQAGWIEGAAILFSVIIIVLVTA FNDSKEKQFRGLQCRIEQEQKFSIIRNGQLIQLPVAEIVVGD
IAQVKYGDLLPADGILIQGNDLKIDESSLTGESDHVKKSLDKDPMLLSGTHVMEGSGRMVVTAVGVNSQT
GIILTLGVNEDDEGEKKKKGKQGVPENRNKAKTQDGVALEIQPLNSQEGIDNEEKDKKAVKVPKKEKS
VLQGKLR LAVQIGKAGLLMSALTVFIIILYFVIDNFVINRRPWLP ECTPIYIQYFVKFFIIGITLVVVA
VPEGLPLAVTISLAYSVKMMKDNLLVRHLDACETMGNATAICSDKTGTLTMNRMTVVQAYIGGIHYRQI
PSPDVFLPKVLDLIVNGISINSAYTSKILPPEKEGGLPRQVGNKTECALLGFVTDLKQDYQAVRNEVPPEE
KLYKVYTFNSVRKSMSTVIRNPNNGGFRMYSGASEIILRKCNRILDRKGEAVPFKNKDRDDMVRTVIEPM
ACDGLRTICIA YRDFDDTEPSWDNENEILTELTCIAVVGIEDPVRPEVPDAIAKCKQAGITVRMVTGDNI
NTARAIA TKCGILTPGDDFLCLEGKEFNRLIRNEKGEVEQEKLDKIWPKLRVLARSSPTDKHTLVKGIID
STVGEHRQVAVTGDGTNDGPALKKADVGFAMGIAGTDVAKEASDIILTDDNFTSIVKAVMWGRNVYDSI
SKFLQFQLTVNVVAVIVAF TGACITQDSPLKAVQMLWVNLIMDTFASLALATEPPTESLLKRRPYGRNKP
LISRTMMKNILGHAFYQLIVIFILVFAGEKFFDIDSGRKAPLHSPPSQHYTIVFNTFVLMQLFNEINSRK
IHGEKNVFSGIYRNIIFCSVVLGTFICQIFIVEFGGKPF SCTLSSLSQWLWCLFIGIGELLWGQFISAIP
TRSLKFLKEAGHGTTEEITKDAEGLDEIDHAEMELRRGQILWFRGLNRIQTQIKVVKAFHSSLHESI QK
PYNQKSIHSFMTHPEFAIEEELPRTPLLD EEEEEENPDKASKFGTRVLLLDGEVTPYANTNNNAVD CNQVQ
LPQSDSSLSQLETSV

TRTRPLEQKLISEEDLAANDILDYKDDDDKV

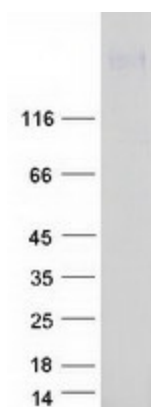
Tag:	C-Myc/DDK
Purity:	> 80% as determined by SDS-PAGE and Coomassie blue staining
Concentration:	>0.05 µg/µL as determined by microplate BCA method
Labeling Method:	Labeled with [U- ¹³ C ₆ , ¹⁵ N ₄]-L-Arginine and [U- ¹³ C ₆ , ¹⁵ N ₂]-L-Lysine



[View online »](#)

Buffer:	25 mM Tris-HCl, 100 mM glycine, pH 7.3
Storage:	Store at -80°C. Avoid repeated freeze-thaw cycles.
Stability:	Stable for 3 months from receipt of products under proper storage and handling conditions.
RefSeq:	NP_001675
RefSeq Size:	8733
RefSeq ORF:	3615
Synonyms:	ATP2B2; MXRA1; PMCA4; PMCA4b; PMCA4x
Locus ID:	493
UniProt ID:	P23634 , A0A024R968
Cytogenetics:	1q32.1
Summary:	The protein encoded by this gene belongs to the family of P-type primary ion transport ATPases characterized by the formation of an aspartyl phosphate intermediate during the reaction cycle. These enzymes remove bivalent calcium ions from eukaryotic cells against very large concentration gradients and play a critical role in intracellular calcium homeostasis. The mammalian plasma membrane calcium ATPase isoforms are encoded by at least four separate genes and the diversity of these enzymes is further increased by alternative splicing of transcripts. The expression of different isoforms and splice variants is regulated in a developmental, tissue- and cell type-specific manner, suggesting that these pumps are functionally adapted to the physiological needs of particular cells and tissues. This gene encodes the plasma membrane calcium ATPase isoform 4. Alternatively spliced transcript variants encoding different isoforms have been identified. [provided by RefSeq, Jul 2008]
Protein Families:	Druggable Genome, Transmembrane
Protein Pathways:	Calcium signaling pathway

Product images:



Coomassie blue staining of purified ATP2B4 protein (Cat# [TP313835]). The protein was produced from HEK293T cells transfected with ATP2B4 cDNA clone (Cat# [RC213835]) using MegaTran 2.0 (Cat# [TT210002]).