

## Product datasheet for PH313834

### IFITM5 (NM\_001025295) Human Mass Spec Standard

#### Product data:

Product Type:	Mass Spec Standards
Description:	IFITM5 MS Standard C13 and N15-labeled recombinant protein (NP_001020466)
Species:	Human
Expression Host:	HEK293
Expression cDNA Clone or AA Sequence:	RC213834
Predicted MW:	14.2 kDa
Protein Sequence:	>RC213834 representing NM_001025295 Red=Cloning site Green=Tags(s)  MDTAYPREDTRAPTPSKAGAHTALTLGAPHPPPRDHLIWSVFSTLYLNLCLGFLALAYSIKARDQKVVG DLEAARRFGSKAKCYNILAAMWTLVPPLLLLGLVVTGALHLARLAKDSAAFFSTKFDDADYD  TRTRPLEQKLI SEEDLAANDILDYKDDDDKV
Tag:	C-Myc/DDK
Purity:	> 80% as determined by SDS-PAGE and Coomassie blue staining
Concentration:	>0.05 µg/µL as determined by microplate BCA method
Labeling Method:	Labeled with [U- 13C6, 15N4]-L-Arginine and [U- 13C6, 15N2]-L-Lysine
Buffer:	25 mM Tris-HCl, 100 mM glycine, pH 7.3
Storage:	Store at -80°C. Avoid repeated freeze-thaw cycles.
Stability:	Stable for 3 months from receipt of products under proper storage and handling conditions.
RefSeq:	<a href="#">NP_001020466</a>
RefSeq Size:	733
RefSeq ORF:	396
Synonyms:	BRIL; DSPA1; fragilis4; Hrmp1; OI5
Locus ID:	387733
UniProt ID:	<a href="#">A6NNB3</a>
Cytogenetics:	11p15.5



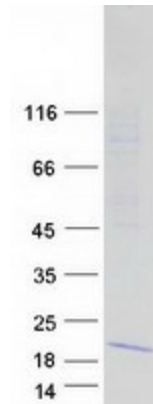
[View online »](#)

**Summary:**

This gene encodes a membrane protein thought to play a role in bone mineralization. This gene is located on chromosome 11 in a cluster of related genes which are induced by interferon, however, this gene has not been shown to be interferon inducible. A similar gene, located in a gene cluster on mouse chromosome 7, is a member of the interferon-inducible fragilis gene family. The mouse gene encodes a transmembrane protein described as participating in germ cell competence. A mutation in the 5' UTR of this gene has been associated with osteogenesis imperfecta type V (PMID: 22863190, 22863195). [provided by RefSeq, Aug 2012]

**Protein Families:**

Transmembrane

**Product images:**

Coomassie blue staining of purified IFITM5 protein (Cat# [TP313834]). The protein was produced from HEK293T cells transfected with IFITM5 cDNA clone (Cat# [RC213834]) using MegaTran 2.0 (Cat# [TT210002]).