

Product datasheet for PH313791

PICALM (NM_007166) Human Mass Spec Standard

Product data:

| | |
|---------------------------------------|--|
| Product Type: | Mass Spec Standards |
| Description: | PICALM MS Standard C13 and N15-labeled recombinant protein (NP_009097) |
| Species: | Human |
| Expression Host: | HEK293 |
| Expression cDNA Clone or AA Sequence: | RC213791 |
| Predicted MW: | 70.6 kDa |
| Protein Sequence: | >RC213791 representing NM_007166 Red=Cloning site Green=Tags(s) |

MSGQSLTDRITAAQHSVTGSVAVSKTVCKATTHEIMGPKKKHLDYLIQCTNEMNVNIPQLADSLFERTTNS
SWVVFVKSLITTHHLMVYGNERFIQYLASRNTLFLNSFLDKSGLQGYDMSTFIRRYRYLNEKAVSYRQ
VAFDFTKVKRGADGVMRTMTEKLLKTVPIIQNQMDALLDFNVNSNELTNGVINAAFMLLFKDAIRLFAA
YNEGIINLLEKYFDMKKNQCKEGLDIYKFLTRMTRISEFLKVAEQVGDIDRGDIPDLSQAPSSLLDALEQ
HLASLEGKKIKDSTAASRATTLNAVSSLASTGLSLTKVDEREKQAALEEEQARLKALKEQRLKELAKKP
HTSLTTAASPVSTSAGGIMTAPAIIDIFSTPSSSNSTSKLPNDLLDLQQPTFHPSVHPMSTASQVASTWGD
PFSATVDAVDDAIPSLNPFLTKSSGDVHLSISSDVSTFTTRTPTHEMFVGFTPSPVAQPHPSAGLNVD
SDFE SVFGNKSTNVIIVDSGGFDELGGLLKPTVASQNQLPVAKLPPSKLVSDDLSSLANLVGNLGIINGTTKN
DYNWSQPGEKKTGGSNWQPKVAPTTAWNAATMAPPVMAYPATPTGMIGYGIQPMGSPVMTQPTLIY
SQPVMRPPNPFPGPVGAQIQFM

TRTRPLEQKLISEEDLAANDILDYKDDDDKV

| | |
|------------------|--|
| Tag: | C-Myc/DDK |
| Purity: | > 80% as determined by SDS-PAGE and Coomassie blue staining |
| Concentration: | >0.05 µg/µL as determined by microplate BCA method |
| Labeling Method: | Labeled with [U- 13C6, 15N4]-L-Arginine and [U- 13C6, 15N2]-L-Lysine |
| Buffer: | 25 mM Tris-HCl, 100 mM glycine, pH 7.3 |
| Storage: | Store at -80°C. Avoid repeated freeze-thaw cycles. |
| Stability: | Stable for 3 months from receipt of products under proper storage and handling conditions. |
| RefSeq: | NP_009097 |
| RefSeq Size: | 3860 |



[View online »](#)

RefSeq ORF: 1956

Synonyms: CALM; CLTH; LAP

Locus ID: 8301

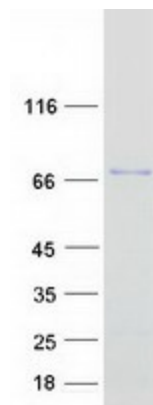
UniProt ID: [Q13492](#), [A0A024R5P1](#), [E9PN05](#)

Cytogenetics: 11q14.2

Summary: This gene encodes a clathrin assembly protein, which recruits clathrin and adaptor protein complex 2 (AP2) to cell membranes at sites of coated-pit formation and clathrin-vesicle assembly. The protein may be required to determine the amount of membrane to be recycled, possibly by regulating the size of the clathrin cage. The protein is involved in AP2-dependent clathrin-mediated endocytosis at the neuromuscular junction. A chromosomal translocation t(10;11)(p13;q14) leading to the fusion of this gene and the MLLT10 gene is found in acute lymphoblastic leukemia, acute myeloid leukemia and malignant lymphomas. The polymorphisms of this gene are associated with the risk of Alzheimer disease. Multiple alternatively spliced transcript variants encoding different isoforms have been found for this gene. [provided by RefSeq, May 2011]

Protein Families: Druggable Genome

Product images:



Coomassie blue staining of purified PICALM protein (Cat# [TP313791]). The protein was produced from HEK293T cells transfected with PICALM cDNA clone (Cat# [RC213791]) using MegaTran 2.0 (Cat# [TT210002]).