

Product datasheet for PH313785

DCL 1 (CD302) (NM_014880) Human Mass Spec Standard

Product data:

Product Type:	Mass Spec Standards
Description:	CD302 MS Standard C13 and N15-labeled recombinant protein (NP_055695)
Species:	Human
Expression Host:	HEK293
Expression cDNA Clone or AA Sequence:	RC213785
Predicted MW:	26 kDa
Protein Sequence:	>RC213785 representing NM_014880 Red =Cloning site Green =Tags(s) MLRAALPALLLPLLGLAAAADCPSSWTIQFQDSCYIFLQEAIKVESIEDVRNQCTDHGADMISIHNEE ENAFILDTLKKQWKGPDDILLGMFYDADDASFKWFDNSNMTFDKWDQDDDEDLVDTCAFLHIKTGEWKK GNCEVSSVEGTLCKTAIPYKRKYLSDNHILISALVIASVILTVLGAIIWFLYKKHSDSRFTTVFSTAPQ SPYNEDCVLVVGEENEYPVQFD TRTRPLEQKLI SEEDLAANDILDYKDDDDKV
Tag:	C-Myc/DDK
Purity:	> 80% as determined by SDS-PAGE and Coomassie blue staining
Concentration:	>0.05 µg/µL as determined by microplate BCA method
Labeling Method:	Labeled with [U- ¹³ C ₆ , ¹⁵ N ₄]-L-Arginine and [U- ¹³ C ₆ , ¹⁵ N ₂]-L-Lysine
Buffer:	25 mM Tris-HCl, 100 mM glycine, pH 7.3
Storage:	Store at -80°C. Avoid repeated freeze-thaw cycles.
Stability:	Stable for 3 months from receipt of products under proper storage and handling conditions.
RefSeq:	NP_055695
RefSeq Size:	3740
RefSeq ORF:	696
Synonyms:	BIMLEC; CLEC13A; DCL-1; DCL1
Locus ID:	9936
UniProt ID:	Q8IX05



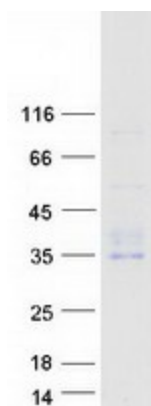
[View online »](#)

Cytogenetics: 2q24.2

Summary: CD302 is a C-type lectin receptor involved in cell adhesion and migration, as well as endocytosis and phagocytosis (Kato et al., 2007 [PubMed 17947679]).[supplied by OMIM, Aug 2008]

Protein Families: Druggable Genome, Transmembrane

Product images:



Coomassie blue staining of purified CD302 protein (Cat# [TP313785]). The protein was produced from HEK293T cells transfected with CD302 cDNA clone (Cat# [RC213785]) using MegaTran 2.0 (Cat# [TT210002]).