

## Product datasheet for PH313771

### ARX (NM\_139058) Human Mass Spec Standard

#### Product data:

|                                       |   |
|---------------------------------------|---|
| Product Type:                         | Mass Spec Standards   |
| Description:                          | ARX MS Standard C13 and N15-labeled recombinant protein (NP_620689) |
| Species:                              | Human   |
| Expression Host:                      | HEK293  |
| Expression cDNA Clone or AA Sequence: | RC213771  |
| Predicted MW:                         | 58 kDa  |
| Protein Sequence:                     | >RC213771 representing NM_139058<br>Red=Cloning site Green=Tags(s)  |

MSNQYQEEGCSERPECKSKSPTLLSSYCIDSI LGRRSPCKMRLLGAAQSLPAPLTSRADPEKAVQGS PKSSAPFEAELHLPKLRRLYGPGGGRL LQGAAAAAAAAAAAAAAAAATATAGPRGEAPPPPTARPERPDGAGAAAAAAAAAWDTL KISQAPQVSI SRSKSYRENGAPFVPPPALDELGGPGGVTHPEERLGVAGGPGSAPAAGGGTGTEDDEEELLEDEEDEDEEELLEDEEELLEDDARALLKEPRRC PVAATGAVAAAAAA AVATEGGELSPKEELLLHPEDAEGKDGEDSVCL SAGSDSEEGLLKRKQRRYRTTFTSYQLEELERAFQKT HYPDVFTREELAMRLDL TEARVQVWFQNRRAKWRKREKAGAQTHTPPGLPFPGPLSATHPLSPYLDASFPFPHHPALDSAWTAAAAAAAAAFPSLPPPGSASLPPSGAPLGLSTFLGAAVFRHPAFISPAFGRLFSTMAPLTSASTAAALLRQPTPAVEGAVASGALADPATAAADRRASSIAALRLKAKEHAAQLTQLNILPGTSTGKEVC

TRTRPLEQKLI SEEDLAANDILDYKDDDDKV

|                  |  |
|------------------|--|
| Tag:             | C-Myc/DDK  |
| Purity:          | > 80% as determined by SDS-PAGE and Coomassie blue staining                                |
| Concentration:   | >0.05 µg/µL as determined by microplate BCA method   |
| Labeling Method: | Labeled with [U- 13C6, 15N4]-L-Arginine and [U- 13C6, 15N2]-L-Lysine                       |
| Buffer:          | 25 mM Tris-HCl, 100 mM glycine, pH 7.3   |
| Storage:         | Store at -80°C. Avoid repeated freeze-thaw cycles.   |
| Stability:       | Stable for 3 months from receipt of products under proper storage and handling conditions. |
| RefSeq:          | <u><a href="#">NP_620689</a></u>   |
| RefSeq Size:     | 2183   |
| RefSeq ORF:      | 1686   |



[View online »](#)

**Synonyms:** CT121; EIEE1; ISSX; MRX29; MRX32; MRX33; MRX36; MRX38; MRX43; MRX54; MRX76; MRX87; MRXS1; PRTS

**Locus ID:** 170302

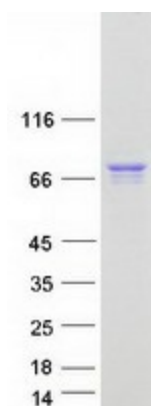
**UniProt ID:** [Q96QS3](#)

**Cytogenetics:** Xp21.3

**Summary:** This gene is a homeobox-containing gene expressed during development. The expressed protein contains two conserved domains, a C-peptide (or aristaless domain) and the prd-like class homeobox domain. It is a member of the group-II aristaless-related protein family whose members are expressed primarily in the central and/or peripheral nervous system. This gene is thought to be involved in CNS development. Expansion of a polyalanine tract and other mutations in this gene cause X-linked cognitive disability and epilepsy. [provided by RefSeq, Jul 2016]

**Protein Families:** Transcription Factors

### Product images:



Coomassie blue staining of purified ARX protein (Cat# [TP313771]). The protein was produced from HEK293T cells transfected with ARX cDNA clone (Cat# [RC213771]) using MegaTran 2.0 (Cat# [TT210002]).