

## Product datasheet for PH313768

### HOXC6 (NM\_004503) Human Mass Spec Standard

#### Product data:

Product Type:	Mass Spec Standards
Description:	HOXC6 MS Standard C13 and N15-labeled recombinant protein (NP_004494)
Species:	Human
Expression Host:	HEK293
Expression cDNA Clone or AA Sequence:	RC213768
Predicted MW:	26.7 kDa
Protein Sequence:	>RC213768 representing NM_004503 Red=Cloning site Green=Tags(s)  MNSYFTNP SLSCHLAGGQDVL PNVALNSTAYDPVRHFSTYGA AVAQNRIYSTPFYSPQENVV FSSSRGPY DYGSNSFYQEKDMLSNCRQNTLGHNTQTSIAQDF SSEQGRTAPQDQKASIQIYPWMQRMNSHSGVGYGAD RRRGRQIYSRYQTLELEKEFHFNRYL TRRRRIEIANALCLTERQIKIWFQNR RMKWKESNL TSTL SGGG GGATADSLGGKEEKREETEE EKQKE  TRTRPLEQKLI SEEDLAANDILDYKDDDDKV
Tag:	C-Myc/DDK
Purity:	> 80% as determined by SDS-PAGE and Coomassie blue staining
Concentration:	>0.05 µg/µL as determined by microplate BCA method
Labeling Method:	Labeled with [U- <sup>13</sup> C <sub>6</sub> , <sup>15</sup> N <sub>4</sub> ]-L-Arginine and [U- <sup>13</sup> C <sub>6</sub> , <sup>15</sup> N <sub>2</sub> ]-L-Lysine
Buffer:	25 mM Tris-HCl, 100 mM glycine, pH 7.3
Storage:	Store at -80°C. Avoid repeated freeze-thaw cycles.
Stability:	Stable for 3 months from receipt of products under proper storage and handling conditions.
RefSeq:	<a href="#">NP_004494</a>
RefSeq Size:	1681
RefSeq ORF:	705
Synonyms:	CP25; HHO.C8; HOX3; HOX3C
Locus ID:	3223
UniProt ID:	<a href="#">P09630</a>



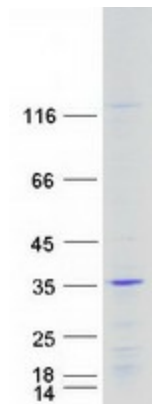
[View online »](#)

**Cytogenetics:** 12q13.13

**Summary:** This gene belongs to the homeobox family, members of which encode a highly conserved family of transcription factors that play an important role in morphogenesis in all multicellular organisms. Mammals possess four similar homeobox gene clusters, HOXA, HOXB, HOXC and HOXD, which are located on different chromosomes and consist of 9 to 11 genes arranged in tandem. This gene, HOXC6, is one of several HOXC genes located in a cluster on chromosome 12. Three genes, HOXC5, HOXC4 and HOXC6, share a 5' non-coding exon. Transcripts may include the shared exon spliced to the gene-specific exons, or they may include only the gene-specific exons. Alternatively spliced transcript variants encoding different isoforms have been identified for HOXC6. Transcript variant two includes the shared exon, and transcript variant one includes only gene-specific exons. [provided by RefSeq, Jul 2008]

**Protein Families:** Transcription Factors

### Product images:



Coomassie blue staining of purified HOXC6 protein (Cat# [TP313768]). The protein was produced from HEK293T cells transfected with HOXC6 cDNA clone (Cat# [RC213768]) using MegaTran 2.0 (Cat# [TT210002]).