

Product datasheet for PH313720

ALDH1L1 (NM_012190) Human Mass Spec Standard

Product data:

Product Type:	Mass Spec Standards
Description:	ALDH1L1 MS Standard C13 and N15-labeled recombinant protein (NP_036322)
Species:	Human
Expression Host:	HEK293
Expression cDNA Clone or AA Sequence:	RC213720
Predicted MW:	98.6 kDa
Protein Sequence:	>RC213720 representing NM_012190 Red=Cloning site Green=Tags(s)

MKIAVIGQSLFGQEVYCHLRKEGHEVVGFTVPDKDGKADPLGLEAEKDGVPVFKYSRWRAGKQALPDVV
AKYQALGAELNVLPFCSQFIPMEIISAPRHGSIYHPSLLPRHRGASAINWTLIHGDKKGGFSIFWADDG
LDTGDLQLQKECEVLPDDTVSTLYNRFLFPEGIKGMVQAVRLIAEGKAPRLPQPEEGATYEGIQKKEAK
INWDQPAEAIHNWIRGNDKVPGAWTEACEQKLTFFNSTLNTSGLVPEGDALPIPGAHRPGVVTKAGLILF
GNDDKMLLVKNIQLEDGKMILASNFFKGAASSVLEL TEAELVTAEAVRSFWQRILPKVLEVEDSTDFFKS
GAASVDVVRLVEEVKELCDGLELENEDVYMASTFGDFIQLLVRKLRGHDEEGECSIDYVEMAVNKRTVVM
PHQLFIGGEFVDAEGAKTSETINPTDGSVICQVSLAQVTDVDKAVAAAKDAFENGRWGKIGARDRGRMLY
RLADLMEQHQEELATIEALDAGAVYTLALKTHVGMISIQTFRYFAGWCDKIQGSTIPINQARPNRNLTLTR
KEPVGVCIIIPWNYPLMMLSWKTAACLAAGNTVVIKPAQVTPLTALKFAELTLKAGIPKGVVNVLPGSG
SLVGQRLSDHPDVRKIGFTGSTEVGKHIKSCAISNVKKVLSLELGGKSPLIIFADCDLNKAVQMGMSSVF
FNKGENCIAAGRLFVEDSIHDEFVRRVVEVRKMKVGNPLDRDTHGPNHHAHLVKLMEYQCQHGKKEGA
TLVCGGNQVPRPGFFFEPTVFTDVEDHMFIAKEESFGPVMIIISRFADGDLDVAVLSRANATEFGLASGVFT
RDINKALYVSDKLQAGTVFVNTYKTDVAAPFGGFKQSGFGKDLGEAALNEYLRVKTVTFEY

TRTRPLEQKLI SEEDLAANDILDYKDDDDKV

Tag:	C-Myc/DDK
Purity:	> 80% as determined by SDS-PAGE and Coomassie blue staining
Concentration:	>0.05 µg/µL as determined by microplate BCA method
Labeling Method:	Labeled with [U- ¹³ C ₆ , ¹⁵ N ₄]-L-Arginine and [U- ¹³ C ₆ , ¹⁵ N ₂]-L-Lysine
Buffer:	25 mM Tris-HCl, 100 mM glycine, pH 7.3
Storage:	Store at -80°C. Avoid repeated freeze-thaw cycles.
Stability:	Stable for 3 months from receipt of products under proper storage and handling conditions.



[View online »](#)

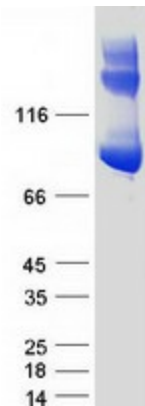
RefSeq:	NP_036322
RefSeq Size:	3125
RefSeq ORF:	2706
Synonyms:	10-fTHF; 10-FTHFDH; FDH; FTHFD
Locus ID:	10840
UniProt ID:	O75891 , Q53H87
Cytogenetics:	3q21.3

Summary: The protein encoded by this gene catalyzes the conversion of 10-formyltetrahydrofolate, nicotinamide adenine dinucleotide phosphate (NADP⁺), and water to tetrahydrofolate, NADPH, and carbon dioxide. The encoded protein belongs to the aldehyde dehydrogenase family. Loss of function or expression of this gene is associated with decreased apoptosis, increased cell motility, and cancer progression. There is an antisense transcript that overlaps on the opposite strand with this gene locus. Alternative splicing results in multiple transcript variants. [provided by RefSeq, Jun 2012]

Protein Families: Druggable Genome

Protein Pathways: One carbon pool by folate

Product images:



Coomassie blue staining of purified ALDH1L1 protein (Cat# [TP313720]). The protein was produced from HEK293T cells transfected with ALDH1L1 cDNA clone (Cat# [RC213720]) using MegaTran 2.0 (Cat# [TT210002]).