

Product datasheet for PH313712

BCS1L (NM_001079866) Human Mass Spec Standard

Product data:

Product Type:	Mass Spec Standards
Description:	BCS1L MS Standard C13 and N15-labeled recombinant protein (NP_001073335)
Species:	Human
Expression Host:	HEK293
Expression cDNA Clone or AA Sequence:	RC213712
Predicted MW:	47.5 kDa
Protein Sequence:	>RC213712 protein sequence Red=Cloning site Green=Tags(s)
	MPLSDFILALKDNPYFGAGFGLVGVGTALALARKGVQLGLVAFRRHYMITLEVPARDRSYAWLLSWLTRH STRTQHLSVETSYLQHESGRISTKFEFVSPGNHFIWYRGKWIRVERSREMQMIDLQTGTPWESVTF TAL GTDRKVFVFNILEEARELALQQEEGKTVMYTAVGSEWRPFYPRRRRPLNSVVLQQGLADRIVRDVQEFID NPKWYTDRGIPYRRGYLLYGPPEGKSSFITALAGELEHSICLLSLTSSSLSDDRLNHLLSVAPQQSLVL LEDVDA AFLSRDLAVENPVKYQGLGRLTFSGLLNALDGVASTEARIIVFMTTNHVDRLDPALIRPGRVDLK EYVGYC SHWQLTQMFQRFYPGQAPSLAENFAEHVLRATNQISPAQVQGYFMLYKNDPVGAIHNAESLRR
	TRTRPLEQKLI SEEDLAANDILDYKDDDDKV
Tag:	C-Myc/DDK
Purity:	> 80% as determined by SDS-PAGE and Coomassie blue staining
Concentration:	>0.05 µg/µL as determined by microplate BCA method
Labeling Method:	Labeled with [U- ¹³ C ₆ , ¹⁵ N ₄]-L-Arginine and [U- ¹³ C ₆ , ¹⁵ N ₂]-L-Lysine
Buffer:	25 mM Tris-HCl, 100 mM glycine, pH 7.3
Storage:	Store at -80°C. Avoid repeated freeze-thaw cycles.
Stability:	Stable for 3 months from receipt of products under proper storage and handling conditions.
RefSeq:	<u>NP_001073335</u>
RefSeq Size:	1454
RefSeq ORF:	1257
Synonyms:	BCS; BCS1; BJS; FLNMS; GRACILE; h-BCS; h-BCS1; Hs.6719; MC3DN1; PTD
Locus ID:	617



[View online »](#)

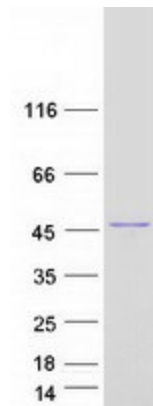
UniProt ID: [Q9Y276](#), [A0A024R445](#)

Cytogenetics: 2q35

Summary: This gene encodes a homolog of the *S. cerevisiae* bcs1 protein which is involved in the assembly of complex III of the mitochondrial respiratory chain. The encoded protein does not contain a mitochondrial targeting sequence but experimental studies confirm that it is imported into mitochondria. Mutations in this gene are associated with mitochondrial complex III deficiency and the GRACILE syndrome. Several alternatively spliced transcripts encoding two different isoforms have been described. [provided by RefSeq, Jan 2016]

Protein Families: Druggable Genome

Product images:



Coomassie blue staining of purified BCS1L protein (Cat# [TP313712]). The protein was produced from HEK293T cells transfected with BCS1L cDNA clone (Cat# [RC213712]) using MegaTran 2.0 (Cat# [TT210002]).