

Product datasheet for PH313703

PCDH1 (NM_032420) Human Mass Spec Standard

Product data:

Product Type:	Mass Spec Standards
Description:	PCDH1 MS Standard C13 and N15-labeled recombinant protein (NP_115796)
Species:	Human
Expression Host:	HEK293
Expression cDNA Clone or AA Sequence:	RC213703
Predicted MW:	130.1 kDa
Protein Sequence:	>RC213703 representing NM_032420 Red=Cloning site Green=Tags(s)

MDSGAGGRRRCPEAALLILGPPRMEHLRHSPGGQRLLLPSMLLALLLLLAPSPGHATRVVYKVPEEQPP
NTLIGSLAADYGFPDVGHLKYLEVGAPYL RVDGKTGDI FTTETSIDREGLRECQNQLPGDPCILEFEVSI
TDLVQNGSPRLLEGQIEVQDINDNTPNF ASPVITLAI PENTNIGSLFPIPLASDRDAGPNGVASYELQAG
PEAQELFGLQVAEDQEEKQPQLIVMGNLDRERWDSYDLTIKVQDGGSPPRASSALLRVTVLDTNDNAPKF
ERPSYEAELSENSPIGHSVIQVKANDSDQGANAIEIYTFHQAPEVVRLLRLDRNTGLITVQGPVDREDL
STLRF SVLAKDRGTNPKSARAQVVTVKDMNDNAPTIEIRGIGLVTHQDGMANISEDVAETAVALVQVS
DRDEGENAAVTCV VAGDVFPQLRQASETGSDSKKKYFLQTTTPLDYEKVKDYTIEIVAVDSGNPPLSSTN
SLKVQVVDVNDNAPVFTQSVTEVAF PENNKPGEVIAEITASDADSGSNAELVYSLEPEPAAKGLFTISPE
TGEIQVKTSLDREQRESYELKVVAADRGPSLQGTATVLVNVLDCNDNDPKFMLS GYNF SVMENMPALSP
VGMVTVIDGDKGENAQVQLSVEQDNGDFVIQNGTGTILSSLSFDREQQSTYTFQLKAVDGGVPPRSAYVG
VTINVLDENDNAPYITAPSNTSHKLLTPQTRLGETVSQVAEDFDSGVNAELIYSIAGGNPYGLFQIGSH
SGAITLEKEIERRHHGLHRLVVKVSDRGKPPRYGTALVHLYVNETLANRTLLETLLGHSLDTPLDIDDIAG
DPEYERSKQRGNILFGVVAGVVAVALLIALAVLVRYCRQREAKSGYQAGKTKDLYAPKPSGKASKGNK
SKGKSKSPKPVKPVVEDEEAGLQKSLKFNLMSDAPGDSPRIHLPLNYPPGSPDLGRHYRSNSPLPSIQL
QPQSPSASKKHQVVQDLPPANTFVGTGDTTSTGSEQYSDYSYRTNPPKYP SKQLPHRRVTF SATSQAQEL
QDPSQHSYYD SGL E E S E T P S S K S S G P R L G P L A L P E D H Y E R T T P D G S I G E M E H P E N D L R P L P D V A M T G T C
TRECSEFGHSDTCWMPGQSSPSRRTKSSALKLSTFVPYQDRGGQEPAGAGSPSPPEDRNTKTAPVRLPLPS
YSAFSSSHSDCKDSATLEEIPLTQTSDFPPAATPASAQTAKREIYL

TRTRPLEQKLISEEDLAANDILDYKDDDDKV

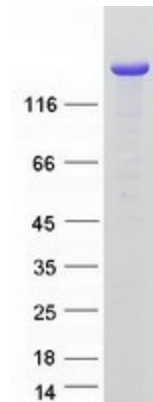
Tag:	C-Myc/DDK
Purity:	> 80% as determined by SDS-PAGE and Coomassie blue staining
Concentration:	>0.05 µg/µL as determined by microplate BCA method
Labeling Method:	Labeled with [U- ¹³ C ₆ , ¹⁵ N ₄]-L-Arginine and [U- ¹³ C ₆ , ¹⁵ N ₂]-L-Lysine



[View online »](#)

Buffer:	25 mM Tris-HCl, 100 mM glycine, pH 7.3
Storage:	Store at -80°C. Avoid repeated freeze-thaw cycles.
Stability:	Stable for 3 months from receipt of products under proper storage and handling conditions.
RefSeq:	NP_115796
RefSeq Size:	4779
RefSeq ORF:	3711
Synonyms:	PC42; PCDH42
Locus ID:	5097
UniProt ID:	Q08174 , B4E2D8
Cytogenetics:	5q31.3
Summary:	This gene belongs to the protocadherin subfamily within the cadherin superfamily. The encoded protein is a membrane protein found at cell-cell boundaries. It is involved in neural cell adhesion, suggesting a possible role in neuronal development. The protein includes an extracellular region, containing 7 cadherin-like domains, a transmembrane region and a C-terminal cytoplasmic region. Cells expressing the protein showed cell aggregation activity. Alternative splicing occurs in this gene. [provided by RefSeq, Jul 2008]
Protein Families:	Transcription Factors, Transmembrane

Product images:



Coomassie blue staining of purified PCDH1 protein (Cat# [TP313703]). The protein was produced from HEK293T cells transfected with PCDH1 cDNA clone (Cat# [RC213703]) using MegaTran 2.0 (Cat# [TT210002]).