

Product datasheet for PH313693

Nectin 2 (NECTIN2) (NM_001042724) Human Mass Spec Standard

Product data:

Product Type:	Mass Spec Standards
Description:	PVRL2 MS Standard C13 and N15-labeled recombinant protein (NP_001036189)
Species:	Human
Expression Host:	HEK293
Expression cDNA Clone or AA Sequence:	RC213693
Predicted MW:	57.74 kDa
Protein Sequence:	>RC213693 representing NM_001042724 Red=Cloning site Green=Tags(s)

MARAAALLPSRSPPTPLLLWPLLLLLLLETGAQDVRVQVLPEVRGQLGGTVLPCHELLPPVPGLYISLVTW
QRPDAPANHQNVAAFHPKMGPSFSPKPGSERLSFVSAKQSTGQDTEAELQDATLALHGLTVEDEGNYTC
EFATFPKGSVRGMTWLRVIAKPKNQAEAKVTFSDPTTVALCISKEGRPPARISWLSLSDWEAKETQVS
GTLAGTVTVTSRFTLVPSGRADGVTVTCKVEHESFEEPALIPVTLSVRYPPPEVSIISGYDDNWYLGRTDAT
LSCDVRNPEPTGYDWTSTSGTFPTSAVAQGSQLVIIHAVDSLNTTFVCTVTNAVGMGRAEQVIFVRETP
NTAGAGATGGIIGGIIAIIATAVAATGILICRQQRKEQTLQGAEEDEDLEGPPSYKPTPKAKLEAQEM
PSQLFTLGASEHSPLKTPYFDAGASCTEQEMPRYHELPTLEERSGPLHPGATSLGSPIPVPPGPPAVEDV
SLDLEDEEGEEEEYLDKINPIYDALSYSSPSDSYQKGFVMSRAMYV

TRTRPLEQKLI SEEDLAANDILDYKDDDDKV

Tag:	C-Myc/DDK
Purity:	> 80% as determined by SDS-PAGE and Coomassie blue staining
Concentration:	>0.05 µg/µL as determined by microplate BCA method
Labeling Method:	Labeled with [U- 13C6, 15N4]-L-Arginine and [U- 13C6, 15N2]-L-Lysine
Buffer:	25 mM Tris-HCl, 100 mM glycine, pH 7.3
Storage:	Store at -80°C. Avoid repeated freeze-thaw cycles.
Stability:	Stable for 3 months from receipt of products under proper storage and handling conditions.
RefSeq:	<u>NP_001036189</u>
RefSeq Size:	2869
RefSeq ORF:	1614



[View online »](#)

Synonyms: CD112; HVEB; PRR2; PVRL2; PVRR2

Locus ID: 5819

UniProt ID: [Q92692](#)

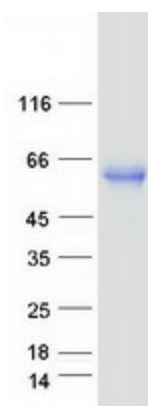
Cytogenetics: 19q13.32

Summary: This gene encodes a single-pass type I membrane glycoprotein with two Ig-like C2-type domains and an Ig-like V-type domain. This protein is one of the plasma membrane components of adherens junctions. It also serves as an entry for certain mutant strains of herpes simplex virus and pseudorabies virus, and it is involved in cell to cell spreading of these viruses. Variations in this gene have been associated with differences in the severity of multiple sclerosis. Alternate transcriptional splice variants, encoding different isoforms, have been characterized. [provided by RefSeq, Jul 2008]

Protein Families: Druggable Genome, Transmembrane

Protein Pathways: Adherens junction, Cell adhesion molecules (CAMs)

Product images:



Coomassie blue staining of purified NECTIN2 protein (Cat# [TP313693]). The protein was produced from HEK293T cells transfected with NECTIN2 cDNA clone (Cat# [RC213693]) using MegaTran 2.0 (Cat# [TT210002]).