

## Product datasheet for PH313689

### Eph receptor A1 (EPHA1) (NM\_005232) Human Mass Spec Standard

#### Product data:

Product Type:	Mass Spec Standards
Description:	EPHA1 MS Standard C13 and N15-labeled recombinant protein (NP_005223)
Species:	Human
Expression Host:	HEK293
Expression cDNA Clone or AA Sequence:	RC213689
Predicted MW:	107.9 kDa
Protein Sequence:	>RC213689 representing NM_005232 Red=Cloning site Green=Tags(s)

MERRWPLGLGLVLLLCAPLPPGAHAKEVTLMDTСКАQGELGWLLDPPKDGWSEQQQILNGTPLYMYQDCP  
MQGRRDTHWLRSNWIYRGEASRVHVELQFTVRDCKSFPGGAGPLGCKETFNLLYMESDQDVGILRRP  
LFQKVTVAADQSFTIRDLAGSVKLNVERCSLGRLLRRGLYLAFHNPACVALVSVRVFYQRCPETLNG  
LAQFPDTPGPAGLVEVAGTCLPHARASPRPSGAPRMHCSPDGEWLVPVGRCHCEPGYEEGSGEACVAC  
PSGSYRMDMDTPHCLTCPQQSTAESEGATICTCESGHYRAGGEGPQVACTGPPSAPRNLSFSASGTQLSL  
RWEPPADTGGQRQDVRYSVRCSQCQGT AQDGGPCQPCGVGVHFSFGARGL TTPAVHVNGLEPYANYTFNVE  
AQNGVSGLGSSGHASTSVSISMGHAESLSGLSLRLVKKEPRQLEL TWAGSRPRSPGANLTYELHVLNQDE  
ERYQMVLPRVLLTELQPDTTYIVRVRMLTPLGPGPFSPDHEFRTPSPVSRGLTGGEIVAVIFGLLLGAA  
LLLGILVFRSRRARQRQRDRATDVEDKDLWPKYVDLQAYEDPAQGALDFRELDPAWLMVDTVI  
GEGEFGEVYRGTLRPLPSQDCKTVAIKTLKDTSPGGQWNNFLREATIMGQFSHPHILHLEGVVTKRKPIMI  
ITEFMENGALDAFLREREDQLVPGQLVAMLQGIASGMNYLSNHNYVHRDLAARNILVNQNLCKVSDFG  
TRLLDDFDGTYETQGGKIPIRWTAPEAIAHRIFTTASDVWSFGIWMWEVLSFGDKPYGEMSNQEVMSIE  
DGYRLPPPVDCPAPLYELMKNCWAYDRARRPHFQKLQAHLEQLLANPHSLRTIANFDPRTLRPLPSLGS  
DGIPYRTVSEWLESIRMKRYILHFHSAGLDTMECVLELTAEDLTQMGITLPGHQKRILCSIQGFKD

TRTRPLEQKLISEEDLAANDILDYKDDDDKV

Tag:	C-Myc/DDK
Purity:	> 80% as determined by SDS-PAGE and Coomassie blue staining
Concentration:	>0.05 µg/µL as determined by microplate BCA method
Labeling Method:	Labeled with [U- <sup>13</sup> C <sub>6</sub> , <sup>15</sup> N <sub>4</sub> ]-L-Arginine and [U- <sup>13</sup> C <sub>6</sub> , <sup>15</sup> N <sub>2</sub> ]-L-Lysine
Buffer:	25 mM Tris-HCl, 100 mM glycine, pH 7.3
Storage:	Store at -80°C. Avoid repeated freeze-thaw cycles.
Stability:	Stable for 3 months from receipt of products under proper storage and handling conditions.



[View online »](#)

RefSeq: [NP\\_005223](#)

RefSeq Size: 3367

RefSeq ORF: 2928

Synonyms: EPH; EPHT; EPHT1

Locus ID: 2041

UniProt ID: [P21709](#)

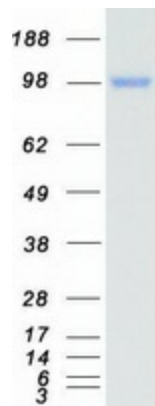
Cytogenetics: 7q34-q35

**Summary:** This gene belongs to the ephrin receptor subfamily of the protein-tyrosine kinase family. EPH and EPH-related receptors have been implicated in mediating developmental events, particularly in the nervous system. Receptors in the EPH subfamily typically have a single kinase domain and an extracellular region containing a Cys-rich domain and 2 fibronectin type III repeats. The ephrin receptors are divided into 2 groups based on the similarity of their extracellular domain sequences and their affinities for binding ephrin-A and ephrin-B ligands. This gene is expressed in some human cancer cell lines and has been implicated in carcinogenesis. [provided by RefSeq, Jul 2008]

**Protein Families:** Druggable Genome, Protein Kinase, Transmembrane

**Protein Pathways:** Axon guidance

### Product images:



Coomassie blue staining of purified EPHA1 protein (Cat# [TP313689]). The protein was produced from HEK293T cells transfected with EPHA1 cDNA clone (Cat# [RC213689]) using MegaTran 2.0 (Cat# [TT210002]).