

Product datasheet for **PH313673**

ASD3 (MYH6) (NM_002471) Human Mass Spec Standard

Product data:

Product Type:	Mass Spec Standards
Description:	MYH6 MS Standard C13 and N15-labeled recombinant protein (NP_002462)
Species:	Human
Expression Host:	HEK293
Expression cDNA Clone or AA Sequence:	RC213673
Predicted MW:	224.2 kDa



[View online »](#)

Protein Sequence: >RC213673 representing NM_002471
 Red=Cloning site Green=Tags(s)

MTDAQMADFGAAQYLRKSEKERLEAQTRPFDIRTECFVPPDDKEEFVKAKILSREGGKVAIETENGTVT
 VKEDQVLQQNPPKFDKIEDMAMLTFLHEPAVLNFKERYAAWMIYTYSGLCVTVNPKWLPVYNAEVVA
 AYRGKKRSEAPPHIFSIDNAYQYMLTDRENQSILITGESGAGKTVNTKRVIQYFASIAAIGDRGKKDNA
 NANKGTLEDQIIQANPALEAFGNAKTVRNDSSRFGKFIRIHFGATGKLASADIETYLLEKSRVIFQLKA
 ERNYHIFYQILSNKKPELLDMLLVTNPNPYDYAFVSQGEVSVASIDDSEELMATDSAFDVLGFTSEEKAGV
 YKLTGAIMHYGNMKFKQKQREEQAEPDGTEDADKSAYLMGLNSADLLKGLCHPRVKVGNVYVTKGQSVQQ
 VYYSIGALAKAVYEKMFNWMVTRINATLETKQPRQYFIVGLDIAGFEIFDFNSFEQLCINFNTNEKLQQFF
 NHHMFVLEQEEYKKEGIEWTFIDFGMDLQACIDLIEKPMGIMSILEEECMFPKATDMTFKAKLYDNHLGK
 SNNFQKPRNIKQKQEAHFSLIHYAGTVDYNILGWLEKNKDPLNETVVVALYQKSSLLKMATLFSSYATADT
 GDSGKSKGGKKKSSSFQTVSALHRENLNKLMTNLRTTHPHFVRCIIPNERKAPGVMDNPLVMHQLRCNGV
 LEGIRICRKGFPNRILYGDFRQRYRILNPVAIPEGQFIDSRKGTAKLLSSLDIDHNQYKFGHTKVFVKAG
 LLGLLEEMRDERLSRIITRMQAQARGQLMRIEFKKIVERRDALLVIQWNI RAFMGVKNWPWMKLYFKIKP
 LLKSAETEKEMATMKEEFGRITKLEKSEARRKELEEKMSVLLQEKNDLQLQVQAEQDNLNDAEERCDQL
 IKNKIQLEAKVKEMNERLEDEEEMNAELTAKKRKLEDECESELKDDIDDELTLAKVEKEKHATENKVKNL
 TEEMAGLDEIIAKLTKEKKALQEAHQALDDLQVEEDKVNSLSKSKVKLEQQVDDLEGSLEQEKVVRMDL
 ERAKRKLEGLDLTQESIMDLENDKLEEKLEKKEFDINQQNSKIEDEQVLAQLQKKLKENQARIEEL
 EEELEAERTARAKVEKLRSDLSRELEEISERLEEAGGATSQIEMNKKREAEFQKMRRDLEEA TLQHEAT
 AAALRKKHADSVAELEGEIDNLQRVKQKLEKEKSEFKLELDDVTSNMEQIIKAKANLEKVSRTLEDQANE
 YRVKLEEAQRSLNDFTTQRAKLQTENGLARQLEEKALISQLTRGKLSYTOQMEDLKRQLEEEGKAKNA
 LAHALQSARHDCDLLREQYEEETEAKAELQRVLSKANSEVAQWRKYETDAIQRTEELEEAKKLAQRLQ
 DAEAEAVNAKCSSLEKTKHRLQNEIEDLMVDVERSNAAAAALDKKQRNFDKILAEWKQKYEESQSELE
 SSQKEARSLSTELFKLNAYEESLEHLETFKRENKLNQEEISDLTEQLGEGGKNVHELEKVRKQLEVEKL
 ELQSALEEAASLEHEEGKILRAQLEFNQIKAEIERKLAEKDEEMEQAQRNHQRVVDLSLQSLDAETRSR
 NEVLRVKKKMEGDLNEMEIQLSHANRMAEAQKQVKSLSLLKDTQIQQLDDAVRANDDLKENIAIVERRN
 NLLQAELEELRAVVEQTERSRLAEQELIETSERVQLLHQSNTSLINQKKMESDLTQLQSEVEEAQVQC
 RNAEEKAKKAITDAAMMAEELKKEQDTS AHLERMKKNMEQTIKDLQHRLDEAEQIALKGGKKQLQKLEAR
 VRELEGELEAEQKRNAESVKGMRKSERRIKELTYQTEEDKKNLLRLQDLVDKQLQKVKAYKRQAEAEAEQ
 ANTNLKFRKQVHELDEAEERADIAESQVNKLRAKSRDIGAKQKMHDEE

TRTRPLEQKLISEEDLAANDILDYKDDDDKV

Tag: C-Myc/DDK

Purity: > 80% as determined by SDS-PAGE and Coomassie blue staining

Concentration: >0.05 µg/µL as determined by microplate BCA method

Labeling Method: Labeled with [U- 13C6, 15N4]-L-Arginine and [U- 13C6, 15N2]-L-Lysine

Buffer: 25 mM Tris-HCl, 100 mM glycine, pH 7.3

Storage: Store at -80°C. Avoid repeated freeze-thaw cycles.

Stability: Stable for 3 months from receipt of products under proper storage and handling conditions.

RefSeq: [NP_002462](#)

RefSeq Size: 5941

RefSeq ORF: 5817

Synonyms: alpha-MHC; ASD3; CMD1EE; CMH14; MYHC; MYHCA; SSS3

Locus ID: 4624

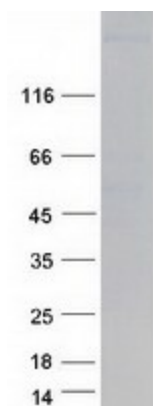
UniProt ID: [P13533](#)

Cytogenetics: 14q11.2

Summary: Cardiac muscle myosin is a hexamer consisting of two heavy chain subunits, two light chain subunits, and two regulatory subunits. This gene encodes the alpha heavy chain subunit of cardiac myosin. The gene is located approximately 4kb downstream of the gene encoding the beta heavy chain subunit of cardiac myosin. Mutations in this gene cause familial hypertrophic cardiomyopathy and atrial septal defect 3. [provided by RefSeq, Feb 2017]

Protein Pathways: Cardiac muscle contraction, Dilated cardiomyopathy, Hypertrophic cardiomyopathy (HCM), Tight junction, Viral myocarditis

Product images:



Coomassie blue staining of purified MYH6 protein (Cat# [TP313673]). The protein was produced from HEK293T cells transfected with MYH6 cDNA clone (Cat# [RC213673]) using MegaTran 2.0 (Cat# [TT210002]).