

Product datasheet for **PH313658**

GP210 (NUP210) (NM_024923) Human Mass Spec Standard

Product data:

Product Type:	Mass Spec Standards
Description:	NUP210 MS Standard C13 and N15-labeled recombinant protein (NP_079199)
Species:	Human
Expression Host:	HEK293
Expression cDNA Clone or AA Sequence:	RC213658
Predicted MW:	204.9 kDa



[View online »](#)

Protein Sequence: >RC213658 representing NM_024923
 Red=Cloning site Green=Tags(s)

MAARGRLLLLLTL SVLLAAGPSAAAANKLNIPKVLPPFTRATRVNFTLEASEGCRYWLSTRPEVASIEPLG
 LDEQQCSQKAVVQARLTQPARLTSIIFAEDITTGQVLRCDIAIVDLIHDIIQIVSTTREL YLEDSPLELKIQ
 ALDSEGNFTSTLAGLVFEWTIVKDSEADRFSDSHNALRILTFLESTYIPPSYI SEMEKAAKQGDITLVSG
 MKTGSSKLRARIQEAVYKNVRPAEVRLLILENILLNPAYDVYLMVGTSIHYKVQKIRQGGITELSMPSDQ
 YELQLQNSIPGPEGDPARPVAVLAQDTSMTALQLGQSSLVLGHR SIRMQASRLPNSTIYVVEPGYLG
 TVHPGDRWVLETGRLYEITIEVFDKFSNKVYVSDNIRIETVLP AEFFFEVLSSSQNGSYHRIRALKRGQTA
 IDAALTSVVDQDGGVHILQVPVWNQEQVEIHIPITLYPSILTFPWQPKTGAYQYTI RAHGGSGNFSWSS
 SHLVATVTVKGVMTTGS DIGFSVIQAHDVQNP LHF GEMKVVYIEPHSMEFAPCQVEARVQALELPLRIS
 GLMPGGASEVVTLSDCSHFDLAVEVENQGVFQPLPGR LPPGSEHC SGIRVKAEAQGSTLLVSYRHGHVH
 LSAKITIAAYLPLKAVDPSSVALVTLGSSKEMLFEGGPRPWILEPSKFFQNVTAEDTDSIGLALFAPHSS
 RNYQQHWILVTCQALGEQVIALSVGNKPSLTNPFPAVEPAVVKFVCAPPSRLTLPVYTSPLQDMSCPLL
 QQNKQVVPVSSHNPRLDLAAYDQEGRRFDNFSSLSIQWESTRPLASIEPELPMQLV SQDDESGQKKLH
 GLQAILVHEASGTTAITATATGYQESHLS SARTKQPHDPLVPLSASIELILVEDVRVSPEEVTIYNHPGI
 QAELRIREGSGYFFLNTSTADVVKVAYQEARGVAMVHPLLPGSSTIMI HDLCLVFPAPAKAVVYVSDIQE
 LYIRVVDKVEIGKTVKAYVRVLDLHKKPFLAKYFPFMDLKLRAASPIITLVALDEALDNYITFLIRGVA
 IGQTSLTASVTNKAGQRINSAPQIEVFPFRLMPRKVTLLIGATMQVTSEGGPQPQSNILFISISNESVA
 LVSAAGLVQGLAIGNGTVSGLVQAVDAETGKVVIISQDLVQVEVLLLRAVRIRAPIMRMRTGTQMPIYVT
 GITNHQNPFSFGNAVPG LTFHWSVTKRDVLDLGRRH EASIRLPSQYNFAMNVLGRVKGR TGLRVVVKAV
 DPTSGQLYGLARELSDEIQVQVFEKLQLLNPEIEAEQILMSPNSYIKLQTNRDGAASLSYRVLDGPEKVP
 VVHVDEKGF L ASGSMIGTSTIEVIAQEPFGANQTIIVAVKVSPVSYLRVSMSPVLHTQNKALVAVPLGM
 TVTFTVHFHDNSGDV FHAHSSVLNFATNRD D FVQIGKGP TNNTCVVRTVSVGLTLLRVWDAEHPGLSDFM
 P L PVLQAI SPEL SGAMVVDVLC L ATVLT SLEGLSGTWSSSANSILHIDPKTGVAVARAVG SVTVVYVEVA
 GHLR TYKEVVVSPQRIMARHLHP IQTSFQEATASKVIVAVGDRSSNLRGECTPTQREVIQALHPETLIS
 CQSQFKPAVDFPSQDVF TVEPQFD TALGQYFCSITMHL TDKQRKHL SMKKTALVVSASLSSSHFSTEQ
 VGAEVPPSPGLFADQAEILL SNHYTSSEIRVFGAPEVLENLEVKSGSPAVLAF AKEKSFSGWPSFITYTVG
 VLDPAAGSQGPLSTTLTFSSPVTNQAI AIPVTVA FVVDRRGPGPYGASLFQHFLDSYQVMFFTLFALLAG
 TAVMIIAYHTVCTPRDLAVPAALTPRASPGHSPHYFAASSPTSPNALPPARKASPPSGLWSPAYASH

TRTRPLEQKLISEEDLAANDILDYKDDDDKV

Tag: C-Myc/DDK

Purity: > 80% as determined by SDS-PAGE and Coomassie blue staining

Concentration: >0.05 µg/µL as determined by microplate BCA method

Labeling Method: Labeled with [U- ¹³C₆, ¹⁵N₄]-L-Arginine and [U- ¹³C₆, ¹⁵N₂]-L-Lysine

Buffer: 25 mM Tris-HCl, 100 mM glycine, pH 7.3

Storage: Store at -80°C. Avoid repeated freeze-thaw cycles.

Stability: Stable for 3 months from receipt of products under proper storage and handling conditions.

RefSeq: [NP_079199](#)

RefSeq Size: 7191

RefSeq ORF: 5661

Synonyms: GP210; POM210

Locus ID: 23225

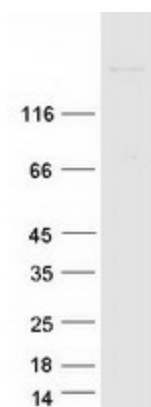
UniProt ID: [Q8TEM1](#)

Cytogenetics: 3p25.1

Summary: The nuclear pore complex is a massive structure that extends across the nuclear envelope, forming a gateway that regulates the flow of macromolecules between the nucleus and the cytoplasm. Nucleoporins are the main components of the nuclear pore complex in eukaryotic cells. The protein encoded by this gene is a membrane-spanning glycoprotein that is a major component of the nuclear pore complex. Multiple pseudogenes related to this gene are located on chromosome 3. [provided by RefSeq, Jul 2013]

Protein Families: Transmembrane

Product images:



Coomassie blue staining of purified NUP210 protein (Cat# [TP313658]). The protein was produced from HEK293T cells transfected with NUP210 cDNA clone (Cat# [RC213658]) using MegaTran 2.0 (Cat# [TT210002]).