

Product datasheet for PH313652

Epsin 2 (EPN2) (NM_014964) Human Mass Spec Standard

Product data:

Product Type:	Mass Spec Standards
Description:	EPN2 MS Standard C13 and N15-labeled recombinant protein (NP_055779)
Species:	Human
Expression Host:	HEK293
Expression cDNA Clone or AA Sequence:	RC213652
Predicted MW:	68.3 kDa
Protein Sequence:	>RC213652 representing NM_014964 Red=Cloning site Green=Tags(s)

MTSSIRRQMKNI VNNYSEAEIKVREATSNDPWGPSSSLMTEIADLTYNVVFSEIMSMVWKRLNDHGKN
WRHVYKALTL LDYLIKTSERVAQQCRENIFAIQTLKDFQYIDRDGKDQGINVREKSKQLVALLKDEERL
KAERAQALKTKERMAQVATGMGSNQITFGRGSSQPNLSTSHSEQEYKAGGSPASYHGSPEASLCPQHRT
GAPLGQSEELQPLSQRHPFLPHLGLASRPNGDWSQPCLTCDRAARATSPRVSSLEQARPQTSGEELQL
QLALAMSREVAEQEERLRGGDLRLQMALEE SRRDVKIPKKKEHGSLPQQTTLLDLMDALPSSGPAQK
AEPWGPSASTNQTNPWGGPAAPASTSDPWPSFGTKPAASIDPWGVPTGATAQSVPKNSDPWAASQQPASS
AGKRASDAWGAVSTTKPVSVSGSFELFNLNGTIKDDFSEFDNLRTSKTAESVTS LPSQNNGTSPDPF
ESQPLTVASSKPSARKTPESFLGPNAALVNLDSLVT RPAPPAQSLNPFLAPGAPATSAPVNPQVNPQPQ
PLTLNQLRGSPVLGTSTSFPGPGVESMAVASMTSAAPQPALGATGSSLTPLGPAMMMVGSVGIPPSAA
QATGTTNPFL

SGP TRTRRLEQKLI SEEDLAANDILDYKDDDDKV

Tag:	C-Myc/DDK
Purity:	> 80% as determined by SDS-PAGE and Coomassie blue staining
Concentration:	>0.05 µg/µL as determined by microplate BCA method
Labeling Method:	Labeled with [U- 13C6, 15N4]-L-Arginine and [U- 13C6, 15N2]-L-Lysine
Buffer:	25 mM Tris-HCl, 100 mM glycine, pH 7.3
Storage:	Store at -80°C. Avoid repeated freeze-thaw cycles.
Stability:	Stable for 3 months from receipt of products under proper storage and handling conditions.
RefSeq:	NP_055779
RefSeq Size:	4814



[View online »](#)

RefSeq ORF: 1923

Synonyms: EHB21

Locus ID: 22905

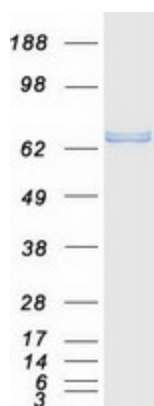
UniProt ID: [O95208](#)

Cytogenetics: 17p11.2

Summary: This gene encodes a protein which interacts with clathrin and adaptor-related protein complex 2, alpha 1 subunit. The protein is found in a brain-derived clathrin-coated vesicle fraction and localizes to the peri-Golgi region and the cell periphery. The protein is thought to be involved in clathrin-mediated endocytosis. Alternate splicing of this gene results in multiple transcript variants encoding different isoforms. [provided by RefSeq, Jul 2008]

Protein Pathways: Endocytosis

Product images:



Coomassie blue staining of purified EPN2 protein (Cat# [TP313652]). The protein was produced from HEK293T cells transfected with EPN2 cDNA clone (Cat# [RC213652]) using MegaTran 2.0 (Cat# [TT210002]).