

Product datasheet for PH313624

SEZ6L (NM_021115) Human Mass Spec Standard

Product data:

Product Type:	Mass Spec Standards
Description:	SEZ6L MS Standard C13 and N15-labeled recombinant protein (NP_066938)
Species:	Human
Expression Host:	HEK293
Expression cDNA Clone or AA Sequence:	RC213624
Predicted MW:	109 kDa
Protein Sequence:	>RC213624 representing NM_021115 Red=Cloning site Green=Tags(s)

MPAARPPAAGLRGISLFLALLLGSPPAAALERDALPEGDASPLGPYLLPSGAPERGSPGKEHPEERVVTAP
PSSSQSAEVLGELVLDGTAPSAHHDIPALSPLLPEEARPKHALPPKKKLPKQVNSARKQLRPKATSAA
TVQRAGSQPASQGLDLLSSSTEKPGPPGDPDPIVASEEASEVPLWDRKESAVPTTPAPLQISPFTSQPY
VAHTLPQRPEPEGEPGPDMAQEAPQEDTSPMALMDKGENELTGSASEESQETTTSTIITTTVITTEQAPAL
CSVSFSNPEGYIDSSDYPLPLNPFLECTYNVTVYTYGYVELQVKSVDLSDGELLIRGVDGPTLTVLAN
QTLLEGGVIRSPNTISVYFRFQDDGLGTFQLHYQAFMLSCNFPRRSDGVTVMDLHSGGVAHFHCH
LGYELQGAKMLTCINASKPHWSSQEPICAPCGGAVHNATIGRVLSPSYENTNGSQFCIWTIEAPEGQK
LHLHFERLLLHDKDRMTVHSGQTNKSALLYDSLQTESVPPFEGLLSEGNTIRIEFTSDQARAASFNIRFE
AFEKGHCYEPYIQNGNFTTSDPTYNIGTIVEFTCDPGHSLEQGPAAIECINVRDPYWNDTEPLCRAMCGG
ELSAVAGVYVLSNWPPEYVEGEDCIWKIHWGEEKRIFLDIQFLNLSNSDILTIDYDGEVMPHILGQYLGN
SGPQKLYSSTPDLTIQFHSDPAGLIFGKGQGFIMNYIEVSRNDSDDLPEIQNGWKTTSHTELVRGARIT
YQCDPGYDIVGSDTLTCQWDLWSSDPPFCEKIMYCTDPGEVDHSTRLLISDPVLLVGTIIQYTCNPGFVL
EGSLLTCYSRETGTPIWTSRLPHCVSEESLACDNPGLPENGYQILYKRLYLPGESLTFMCEYEGFELMGE
VTIRCILGQPSHWNGPLPVCKVNQDSFEHALVAEAAAETSLEGGNMALAIIPVLIISLLGGAYIYIT
RCRYYSNLRPLMYSHPSQITVETFDNPIYETGETREYEVSI

TRTRPLEQKLISEEDLAANDILDYKDDDDKV

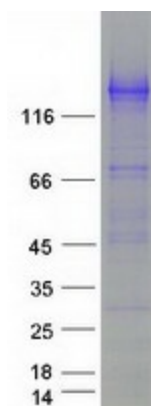
Tag:	C-Myc/DDK
Purity:	> 80% as determined by SDS-PAGE and Coomassie blue staining
Concentration:	>0.05 µg/µL as determined by microplate BCA method
Labeling Method:	Labeled with [U- ¹³ C ₆ , ¹⁵ N ₄]-L-Arginine and [U- ¹³ C ₆ , ¹⁵ N ₂]-L-Lysine
Buffer:	25 mM Tris-HCl, 100 mM glycine, pH 7.3
Storage:	Store at -80°C. Avoid repeated freeze-thaw cycles.



[View online »](#)

Stability:	Stable for 3 months from receipt of products under proper storage and handling conditions.
RefSeq:	NP_066938
RefSeq Size:	3424
RefSeq ORF:	3072
Locus ID:	23544
UniProt ID:	Q9BYH1
Cytogenetics:	22q12.1
Summary:	May contribute to specialized endoplasmic reticulum functions in neurons.[UniProtKB/Swiss-Prot Function]
Protein Families:	Druggable Genome, Transmembrane

Product images:



Coomassie blue staining of purified SEZ6L protein (Cat# [TP313624]). The protein was produced from HEK293T cells transfected with SEZ6L cDNA clone (Cat# [RC213624]) using MegaTran 2.0 (Cat# [TT210002]).