

Product datasheet for PH313585

UBE2D3 (NM_181886) Human Mass Spec Standard

Product data:

Product Type:	Mass Spec Standards
Description:	UBE2D3 MS Standard C13 and N15-labeled recombinant protein (NP_871615)
Species:	Human
Expression Host:	HEK293
Expression cDNA Clone or AA Sequence:	RC213585
Predicted MW:	16.7 kDa
Protein Sequence:	>RC213585 representing NM_181886 Red =Cloning site Green =Tags(s) MALKRINKELSDLARDPPAQCSAGPVGDDMFHWQATIMGPNDSPYQGGVFFLTIHFPTDYPFKPPKVAFT TRIHYPNINSNGSICLDILRSQWSPALTISKVLLSICSLLCDPNPDDPLVPEIARIYKTRDRKYNRISRE WTQKYAM TR TRPLEQ KL I SEED LA AND I LDYK DDDD KV
Tag:	C-Myc/DDK
Purity:	> 80% as determined by SDS-PAGE and Coomassie blue staining
Concentration:	>0.05 µg/µL as determined by microplate BCA method
Labeling Method:	Labeled with [U- ¹³ C ₆ , ¹⁵ N ₄]-L-Arginine and [U- ¹³ C ₆ , ¹⁵ N ₂]-L-Lysine
Buffer:	25 mM Tris-HCl, 100 mM glycine, pH 7.3
Storage:	Store at -80°C. Avoid repeated freeze-thaw cycles.
Stability:	Stable for 3 months from receipt of products under proper storage and handling conditions.
RefSeq:	NP_871615
RefSeq Size:	4184
RefSeq ORF:	441
Synonyms:	E2(17)KB3; UBC4/5; UBCH5C
Locus ID:	7323
UniProt ID:	P61077 , A0A024RDH2



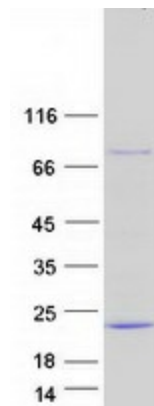
[View online »](#)

Cytogenetics: 4q24

Summary: The modification of proteins with ubiquitin is an important cellular mechanism for targeting abnormal or short-lived proteins for degradation. Ubiquitination involves at least three classes of enzymes: ubiquitin-activating enzymes, or E1s, ubiquitin-conjugating enzymes, or E2s, and ubiquitin-protein ligases, or E3s. This gene encodes a member of the E2 ubiquitin-conjugating enzyme family. This enzyme functions in the ubiquitination of the tumor-suppressor protein p53, which is induced by an E3 ubiquitin-protein ligase. [provided by RefSeq, Jan 2017]

Protein Pathways: Ubiquitin mediated proteolysis

Product images:



Coomassie blue staining of purified UBE2D3 protein (Cat# [TP313585]). The protein was produced from HEK293T cells transfected with UBE2D3 cDNA clone (Cat# [RC213585]) using MegaTran 2.0 (Cat# [TT210002]).