

Product datasheet for PH313584

ARL6 (NM_177976) Human Mass Spec Standard

Product data:

Product Type:	Mass Spec Standards
Description:	ARL6 MS Standard C13 and N15-labeled recombinant protein (NP_816931)
Species:	Human
Expression Host:	HEK293
Expression cDNA Clone or AA Sequence:	RC213584
Predicted MW:	21.1 kDa
Protein Sequence:	>RC213584 protein sequence Red=Cloning site Green=Tags(s) MGLLDRLSVLLGLKKKEVHVLCLGLDNSGKTTIINKLKPSNAQSQNILPTIGFSIEKFKSSLSFTVFDM SGQGRYRNLWEHYKQAIIFVIDSSDRLRMVVAKEELDTLLNHPDIKHRRIPILFFANKMDLRDAVTS VKYSQLLCLENIKDKPWHICASDAIKGEGLQEGVDWLQDQIQTVKT TRTRPLEQKLISEEDLAANDILDYKDDDDKV
Tag:	C-Myc/DDK
Purity:	> 80% as determined by SDS-PAGE and Coomassie blue staining
Concentration:	>0.05 µg/µL as determined by microplate BCA method
Labeling Method:	Labeled with [U- 13C6, 15N4]-L-Arginine and [U- 13C6, 15N2]-L-Lysine
Buffer:	25 mM Tris-HCl, 100 mM glycine, pH 7.3
Storage:	Store at -80°C. Avoid repeated freeze-thaw cycles.
Stability:	Stable for 3 months from receipt of products under proper storage and handling conditions.
RefSeq:	NP_816931
RefSeq Size:	1590
RefSeq ORF:	558
Synonyms:	BBS3; RP55
Locus ID:	84100
UniProt ID:	Q9H0F7

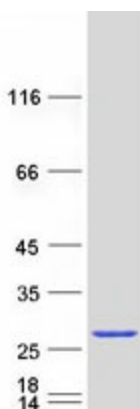


[View online »](#)

Cytogenetics: 3q11.2

Summary: The protein encoded by this gene belongs to the ARF-like (ADP ribosylation factor-like) sub-family of the ARF family of GTP-binding proteins which are involved in regulation of intracellular traffic. Mutations in this gene are associated with Bardet-Biedl syndrome (BBS). A vision-specific transcript, encoding long isoform BBS3L, has been described (PMID: 20333246). [provided by RefSeq, Apr 2016]

Product images:



Coomassie blue staining of purified ARL6 protein (Cat# [TP313584]). The protein was produced from HEK293T cells transfected with ARL6 cDNA clone (Cat# [RC213584]) using MegaTran 2.0 (Cat# [TT210002]).