

## Product datasheet for PH313583

### MYLK2 (NM\_033118) Human Mass Spec Standard

#### Product data:

Product Type:	Mass Spec Standards
Description:	MYLK2 MS Standard C13 and N15-labeled recombinant protein (NP_149109)
Species:	Human
Expression Host:	HEK293
Expression cDNA Clone or AA Sequence:	RC213583
Predicted MW:	64.7 kDa
Protein Sequence:	>RC213583 protein sequence Red=Cloning site Green=Tags(s)

MATENGAVELGIQNPSTDKAPKGPPTGERPLAAGKDPGPPDPKKAPDPPTLKKDAKAPASEKGDGTLAQPS  
TSSQGPKGEGDRGGPAEGSAGPPAALPQQTATPETSVKKPKAEQASGSQDPGKPRVGKAAEQAAAAR  
RGSFPAFLHSPSCPAIISSSEKLLAKKPPSEASELTFEGVPMTHSPTDRPAKAAEKGKILAESQKEVGEK  
TPGQAGQAKMQGDTSRGIEFQAVPSEKSEVQALCLTAREEDCFQILDCCPPPPAPFPHRMVELRTGNVS  
SEFSMNSKEALGGGKFGAVCTCMEKATGLKLAHVIKKQTPKDKEMVLLIEIVMNQLNHRNLIQLYAAIE  
TPHEIVLFMEYIEGGELFERIVDEYHLTEVDTMVFVRQICDGLFMHKMRVHLHLDPENILCVNTTGH  
LVKIIDFGLARRYNPNEKLVNFGTPEFLSPEVVNYDQISDKTDMWSMGVITYMLLSGLSPFLGDDDTET  
LNNVLSGNWYFDEETFEAVSDEAKDFVSNLIVKQQRARMNAAQCLAHPWLNLAEKAKRCNRRLKSQILL  
KKYLMKRRWKNFIAVSAANRFKKISSSGALMALGV

TRTRPLEQKLISEEDLAANDILDYKDDDDKV

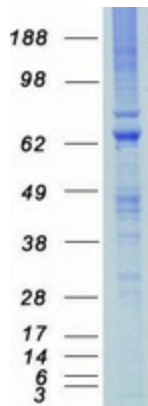
Tag:	C-Myc/DDK
Purity:	> 80% as determined by SDS-PAGE and Coomassie blue staining
Concentration:	>0.05 µg/µL as determined by microplate BCA method
Labeling Method:	Labeled with [U- <sup>13</sup> C <sub>6</sub> , <sup>15</sup> N <sub>4</sub> ]-L-Arginine and [U- <sup>13</sup> C <sub>6</sub> , <sup>15</sup> N <sub>2</sub> ]-L-Lysine
Buffer:	25 mM Tris-HCl, 100 mM glycine, pH 7.3
Storage:	Store at -80°C. Avoid repeated freeze-thaw cycles.
Stability:	Stable for 3 months from receipt of products under proper storage and handling conditions.
RefSeq:	<a href="#">NP_149109</a>
RefSeq Size:	2793
RefSeq ORF:	1788



[View online »](#)

<b>Synonyms:</b>	KMLC; MLCK; MLCK2; skMLCK
<b>Locus ID:</b>	85366
<b>UniProt ID:</b>	<a href="#">Q9H1R3</a>
<b>Cytogenetics:</b>	20q11.21
<b>Summary:</b>	This gene encodes a myosin light chain kinase, a calcium/calmodulin dependent enzyme, that is exclusively expressed in adult skeletal muscle. [provided by RefSeq, Jul 2008]
<b>Protein Families:</b>	Druggable Genome, Protein Kinase
<b>Protein Pathways:</b>	Calcium signaling pathway, Focal adhesion, Regulation of actin cytoskeleton, Vascular smooth muscle contraction

### Product images:



Coomassie blue staining of purified MYLK2 protein (Cat# [TP313583]). The protein was produced from HEK293T cells transfected with MYLK2 cDNA clone (Cat# [RC213583]) using MegaTran 2.0 (Cat# [TT210002]).