

Product datasheet for PH313576

PLA2R (PLA2R1) (NM_001007267) Human Mass Spec Standard

Product data:

Product Type:	Mass Spec Standards
Description:	PLA2R1 MS Standard C13 and N15-labeled recombinant protein (NP_001007268)
Species:	Human
Expression Host:	HEK293
Expression cDNA Clone or AA Sequence:	RC213576
Predicted MW:	152.81 kDa
Protein Sequence:	>RC213576 representing NM_001007267 Red=Cloning site Green=Tags(s)

MLLSPSLLLLLLLLGAPRGCAEGVAAALTPERLLEWQDKGIFVIQSESLKKCIQAGKSVLTLENCKQANKH
MLWKWVSNHGLFNIGSGGLGLNFSAPQPLSLYECSTLVSLRWRCNRKMITGPLQYSVQVAHDNTVVA
SRKYIHKWISYSGGGDICEYLHKDLHTIKGNTHGMPCMFPFYQNHQWHHECTREGREDDLLWCATTSRY
ERDEKWFPCDPTSAEVGCDTIWEKDLNSHICYQFNLLSSLWSSEAHSSCQMGGTLLSITDETEENFIR
EHMSSKTEVVMGLNQLDEHAGWQSDGTPNLNWSPEVNFEPFVEDHCGTFSSFMPSAWRSRDCESTL
PYICKKYLNHIDHEIVEKDAWKYYATHCEPGWNPYNRCYKQKEEKTWHEALRSCQADNSALIDITSLA
EVEFLVTLGDNASETWIGLSSNKIPVSFEWSDSSVIFTNWHLEPHIFPNRSQLCVSAEQSEGHWKV
KNCEERLFYICKKAGHVLSDAESGCQEGWERHGGFCYKIDTVLRSFDQASSGYCPPALVTITNRFEQAF
ITSLISSVVKMDSYFWIALQDQNDTGEYTWKPVGQKPEPVQYTHWNTHQPRYSGGCVAMRGRHPLGRWE
YKHCRRHFKAMSLCKQPVENQEKAIEEERWPFHPCYLDWESEPLASCVKVFHSEKVLKRTWREAEAFCE
EFGAHLASFAHIEEENFVNELLHSKFNWTEERQFWIGFNKRNLNAGSWEWSDRTPVVSFLDNTYFGED
ARNCAVYKANKTLLPLHCGSKREWICKIPRDVKPKIPFWYQYDVPWLFYQDAEYLFHTFASEWLNFEVFC
SWLHSDLLTIHSAHEQEFIHSKIKALSKYGASWWIGLQEERANDEFWRWDGTPVIYQNWDTGRERTVNNQ
SQRCGFISSITGLWGSEECVSMPSICKRKKVWLEKDKDTPKQHGTCPKGWL YFNKCLLLNIPKDPSS
WKNWTHAQHFCAEEGTLVAIESEVEQAFITMNLFGQTTSVWIGLQDDYETWLNKGPVVYSNWSFPDII
NIPSHNTTEVQKHIPLCALLSSNPNFHFTGKWFYFEDCGKEGYGFVCEKMQDTSGHGVNTSDMYPMPNTE
YGNRTYKIIINANMTWYAAIKTCLMKAQLVSI TDQYHQSFLLTVLNLRLGYAHWIGLFTTDNGLNFDWSDG
TKSSFTFWKDEESSLLGDCVAFADSNRWHSTACEFLLQGAICHVPPETRQSEHPELCSSETSIPWIKFKSN
CYSFSTVLDSMSFEAAHEFCCKEGSNLLTIKDEAENAFLEELFAFGSSVQMVWLNQAFDGNK

TRTRPLEQKLISEEDLAANDILDYKDDDDKV

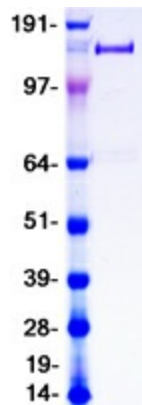
Tag:	C-Myc/DDK
Purity:	> 80% as determined by SDS-PAGE and Coomassie blue staining
Concentration:	>0.05 µg/µL as determined by microplate BCA method



[View online »](#)

Labeling Method:	Labeled with [U- ¹³ C ₆ , ¹⁵ N ₄]-L-Arginine and [U- ¹³ C ₆ , ¹⁵ N ₂]-L-Lysine
Buffer:	25 mM Tris-HCl, 100 mM glycine, pH 7.3
Storage:	Store at -80°C. Avoid repeated freeze-thaw cycles.
Stability:	Stable for 3 months from receipt of products under proper storage and handling conditions.
RefSeq:	NP_001007268
RefSeq Size:	5160
RefSeq ORF:	3972
Synonyms:	CLEC13C; PLA2-R; PLA2G1R; PLA2IR; PLA2R
Locus ID:	22925
UniProt ID:	Q13018
Cytogenetics:	2q24.2
Summary:	This gene represents a phospholipase A2 receptor. The encoded protein likely exists as both a transmembrane form and a soluble form. The transmembrane receptor may play a role in clearance of phospholipase A2, thereby inhibiting its action. Polymorphisms at this locus have been associated with susceptibility to idiopathic membranous nephropathy. Alternatively spliced transcript variants encoding different isoforms have been identified.[provided by RefSeq, Sep 2010]
Protein Families:	Druggable Genome, Transmembrane

Product images:



Coomassie blue staining of purified PLA2R1 protein (Cat# [TP313576]). The protein was produced from HEK293T cells transfected with PLA2R1 cDNA clone (Cat# [RC213576]) using MegaTran 2.0 (Cat# [TT210002]).