

Product datasheet for PH313527

CYP2A7 (NM_000764) Human Mass Spec Standard

Product data:

Product Type:	Mass Spec Standards
Description:	CYP2A7 MS Standard C13 and N15-labeled recombinant protein (NP_000755)
Species:	Human
Expression Host:	HEK293
Expression cDNA Clone or AA Sequence:	RC213527
Predicted MW:	56.4 kDa
Protein Sequence:	>RC213527 protein sequence Red=Cloning site Green=Tags(s)

MLASGLLLVALLACLTVMLMSVWQQRKSRGKLPPTPLPFIGNYLQLNTEHICDSIMKFSECYGPVFT
IHLGPRRAVVLCGHDAVREALVDQAEFSGRGEQATFDWYFKGYGVAFSNGERAKQLLRFAIATLRDFGV
GKRGIEERIQEESGFLIEAIRSTHGANIDPTFFLSRTVSNVISSIVFGDRFDYEDKEFLSLLSVMLGIFQ
FTSTSTGQLYEMFSSVMKHLPGPQQQAFKLLQGLEDFIAKKVEHNQRTLDPNSPRDFIDSFLIRMQEEEK
NPNTEFYLKNLMMSTLNLFIAGTETVSTLRYGFLLMKHPEVEAKVHEEIDRVIGKNRQPKFEDRAKMP
YMEAVIHEIQRFQDVIPMSLARRVKKDTKFRDFFLPKGTEVFPMLGSVLRDPSFFSNPQDFNPQHFLDDK
GQFKKSDAFVPPSIGKRYCFGEGLARMELFLFFTVMQNFRLKSSQSPKIDVSPKHVGFATIPRNYTMS
FLPR

TRTRPLEQKLISEEDLAANDILDYKDDDDKV

Tag:	C-Myc/DDK
Purity:	> 80% as determined by SDS-PAGE and Coomassie blue staining
Concentration:	>0.05 µg/µL as determined by microplate BCA method
Labeling Method:	Labeled with [U- ¹³ C ₆ , ¹⁵ N ₄]-L-Arginine and [U- ¹³ C ₆ , ¹⁵ N ₂]-L-Lysine
Buffer:	25 mM Tris-HCl, 100 mM glycine, pH 7.3
Storage:	Store at -80°C. Avoid repeated freeze-thaw cycles.
Stability:	Stable for 3 months from receipt of products under proper storage and handling conditions.
RefSeq:	<u>NP_000755</u>
RefSeq Size:	2281
RefSeq ORF:	1482



[View online »](#)

Synonyms: CPA7; CPAD; CYP2A; CYP11A7; P450-IIA4

Locus ID: 1549

UniProt ID: [P20853](#)

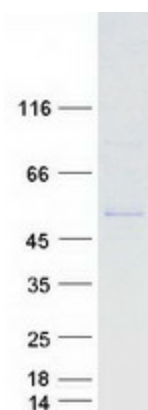
Cytogenetics: 19q13.2

Summary: This gene encodes a member of the cytochrome P450 superfamily of enzymes. The cytochrome P450 proteins are monooxygenases which catalyze many reactions involved in drug metabolism and synthesis of cholesterol, steroids and other lipids. This protein localizes to the endoplasmic reticulum; its substrate has not yet been determined. This gene, which produces two transcript variants, is part of a large cluster of cytochrome P450 genes from the CYP2A, CYP2B and CYP2F subfamilies on chromosome 19q. [provided by RefSeq, Jul 2008]

Protein Families: Druggable Genome, P450, Transmembrane

Protein Pathways: Caffeine metabolism, Drug metabolism - cytochrome P450, Drug metabolism - other enzymes, Metabolic pathways, Retinol metabolism

Product images:



Coomassie blue staining of purified CYP2A7 protein (Cat# [TP313527]). The protein was produced from HEK293T cells transfected with CYP2A7 cDNA clone (Cat# [RC213527]) using MegaTran 2.0 (Cat# [TT210002]).