

Product datasheet for PH313522

SH3GL3 (NM_003027) Human Mass Spec Standard

Product data:

Product Type:	Mass Spec Standards
Description:	SH3GL3 MS Standard C13 and N15-labeled recombinant protein (NP_003018)
Species:	Human
Expression Host:	HEK293
Expression cDNA Clone or AA Sequence:	RC213522
Predicted MW:	39.1 kDa
Protein Sequence:	>RC213522 representing NM_003027 Red =Cloning site Green =Tags(s) MSVAGLKKQFHKASQLFSEKISGAEGTKLDDEFDMERKIDVTNKVVAEILSKTTEYLQPNPAYRAKLGM LNTVSKIRGQVKTTGYPQTEGLLGDCMLKYGKELGEDSTFGNALIEVGESMKLMAEVKDSLDINVKQTFI DPLQLLQDKDLKEIGHHLKKEGRRLDYDYKKRKGKIPDEEVRQAVEKFEEKELAERSMNFLENDVE QVSQLAVFIEAALDYHRQSTEILQELQSKLQMRI SAASSVPRREYKPRPVKRSSSELNGVSTTSVVKTTG SNIPMDQPCCRGLYDFEPENQGELGFKEGDIITL TNQIDENWYEGMIHGESGFFPINYVEVIVPLPQ TRTRPLEQKLI SEEDLAANDILDYKDDDDKV
Tag:	C-Myc/DDK
Purity:	> 80% as determined by SDS-PAGE and Coomassie blue staining
Concentration:	>0.05 µg/µL as determined by microplate BCA method
Labeling Method:	Labeled with [U- ¹³ C ₆ , ¹⁵ N ₄]-L-Arginine and [U- ¹³ C ₆ , ¹⁵ N ₂]-L-Lysine
Buffer:	25 mM Tris-HCl, 100 mM glycine, pH 7.3
Storage:	Store at -80°C. Avoid repeated freeze-thaw cycles.
Stability:	Stable for 3 months from receipt of products under proper storage and handling conditions.
RefSeq:	<u>NP_003018</u>
RefSeq Size:	2015
RefSeq ORF:	1041
Synonyms:	CNSA3; EEN-B2; HsT19371; SH3D2C; SH3P13
Locus ID:	6457



[View online »](#)

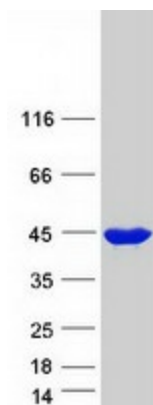
UniProt ID: [Q99963](#)

Cytogenetics: 15q25.2

Summary: Implicated in endocytosis. May recruit other proteins to membranes with high curvature (By similarity).[UniProtKB/Swiss-Prot Function]

Protein Pathways: Endocytosis

Product images:



Coomassie blue staining of purified SH3GL3 protein (Cat# [TP313522]). The protein was produced from HEK293T cells transfected with SH3GL3 cDNA clone (Cat# [RC213522]) using MegaTran 2.0 (Cat# [TT210002]).