

## Product datasheet for PH313518

### COBRA1 (NELFB) (NM\_015456) Human Mass Spec Standard

#### Product data:

Product Type:	Mass Spec Standards
Description:	COBRA1 MS Standard C13 and N15-labeled recombinant protein (NP_056271)
Species:	Human
Expression Host:	HEK293
Expression cDNA Clone or AA Sequence:	RC213518
Predicted MW:	65.5 kDa
Protein Sequence:	>RC213518 representing NM_015456 Red=Cloning site Green=Tags(s)

MFAGLQDLGVANGEDLKETLTNCTEPLKAIEQFQTENGVLLPSLQSQALPFLDLHGTPRLEFHQSVFDELKDKLLERSAIASEGKAEERYKKLEDLLEKSFSLVKMPSLQPVVMCMKHLPKVPEKKLVMADKELYRACAVEVKRQIWDNQALFGDEVSPLLKQYILEKESALFSTELSVLHNFFSPSPKTRRQGEVQRLTRMVGKNVKLYDMVLQFLRTLFLRTRNVHYCTLRAELMSLHDLVDVGEICTVDPCHKFTWCLDACIRERFVDSKRARELQGFLDGVKKGQEQVLGDLMSILCDPFAINTLALSTVRHLQELVGQETLPRDSPDLLLRLALGQGAWDMIDSQVFKPKMEVELITRFLPMLMSFLVDDYTFNVDQKLPAAEKAPVSYNTLPESFTKFLQEQRMACEVGLYYVLHITKQRNKNALLRLLPGLVETFGDLAFGDIFLHLLTGNLALLADEFALDFCSSLFDGFFLTASPRKENVHRHALRLLIHLHPRVAPSKLEALQKALEPTGQSGEAVKELYSQLGEKLEQLDHRKPSPAQAAETPALELPLPSVPAPAPL

TRTRPLEQKLI SEEDLAANDILDYKDDDDKV

Tag:	C-Myc/DDK
Purity:	> 80% as determined by SDS-PAGE and Coomassie blue staining
Concentration:	>0.05 µg/µL as determined by microplate BCA method
Labeling Method:	Labeled with [U- 13C6, 15N4]-L-Arginine and [U- 13C6, 15N2]-L-Lysine
Buffer:	25 mM Tris-HCl, 100 mM glycine, pH 7.3
Storage:	Store at -80°C. Avoid repeated freeze-thaw cycles.
Stability:	Stable for 3 months from receipt of products under proper storage and handling conditions.
RefSeq:	<a href="#">NP_056271</a>
RefSeq Size:	2622
RefSeq ORF:	1740



[View online »](#)

**Synonyms:** COBRA1; NELF-B

**Locus ID:** 25920

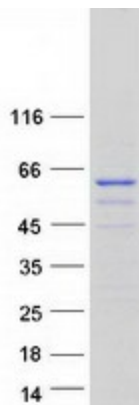
**UniProt ID:** [Q8WX92](#)

**Cytogenetics:** 9q34.3

**Summary:** NELFB is a subunit of negative elongation factor (NELF), which also includes NELFA (WHSC2; MIM 606026), either NELFC or NELFD (TH1L; MIM 605297), and NELFE (RDBP; MIM 154040). NELF acts with DRB sensitivity-inducing factor (DSIF), a heterodimer of SPT4 (SUPT4H1; MIM 603555) and SPT5 (SUPT5H; MIM 602102), to cause transcriptional pausing of RNA polymerase II (see MIM 180660) (Narita et al., 2003 [PubMed 12612062]).[supplied by OMIM, Mar 2008]

**Protein Families:** Transcription Factors

### Product images:



Coomassie blue staining of purified NELFB protein (Cat# [TP313518]). The protein was produced from HEK293T cells transfected with NELFB cDNA clone (Cat# [RC213518]) using MegaTran 2.0 (Cat# [TT210002]).