

Product datasheet for PH313516

TBL1 (TBL1X) (NM_005647) Human Mass Spec Standard

Product data:

Product Type:	Mass Spec Standards
Description:	TBL1X MS Standard C13 and N15-labeled recombinant protein (NP_005638)
Species:	Human
Expression Host:	HEK293
Expression cDNA Clone or AA Sequence:	RC213516
Predicted MW:	62.3 kDa
Protein Sequence:	>RC213516 representing NM_005647 Red=Cloning site Green=Tags(s)

MTELAGASSSCCHRPAGRGAMQSVLHHFQRLRGREGGSHFINTSSPRGEAKMSITSDEVNFLVYRYLQES
GFSHSAFTFGIESHISQSNINGTLVPPAALISILQKGLQYVEAEISINEDGTVFDGRPIESLSLIDAVMP
DYYQTRQQAQFREKLAQQQASAAAAAATAAATAATTTAGVSHQNPSKNREATVNGEENRAHSVNNHAK
PMEIDGEVEIPSSKATVLRGHESEVFCAWNPSDLLASGSGDSTARIWNLNENSGGSTQLVLRHCIRE
GGHDVPSNKDVTSLDWTNGTLLATGSYDGFARIWTEGDLASTLGQHKGPIFALKWNRKGNVILSAGVD
KTTIIWDAHTGEAKQQFPFHSAPALDVDWQNNTFASCSTDMCIHVCRLGCDRPVKTFQGHTEVNAIKW
DPSGMLLASCSDDMTLKIWSMKQEVCIHDLQAHNKEIYTIKWSPTGPATSNPNSNIMLASASFDSTVRLW
DIERGVTHTLTKHQEPVYSVAFSPDGKYLASGSFDKCVHIWNTQSGNLVHSYRGTGGIFEVCWNARGDK
VGASASDGSVCVLDLRK

TRTRPLEQKLI SEEDLAANDILDYKDDDDKV

Tag:	C-Myc/DDK
Purity:	> 80% as determined by SDS-PAGE and Coomassie blue staining
Concentration:	>0.05 µg/µL as determined by microplate BCA method
Labeling Method:	Labeled with [U- ¹³ C ₆ , ¹⁵ N ₄]-L-Arginine and [U- ¹³ C ₆ , ¹⁵ N ₂]-L-Lysine
Buffer:	25 mM Tris-HCl, 100 mM glycine, pH 7.3
Storage:	Store at -80°C. Avoid repeated freeze-thaw cycles.
Stability:	Stable for 3 months from receipt of products under proper storage and handling conditions.
RefSeq:	NP_005638
RefSeq Size:	5886
RefSeq ORF:	1731



[View online »](#)

Synonyms: CHNG8; EBI; SMAP55; TBL1

Locus ID: 6907

UniProt ID: [O60907](#), [A0A024RBV9](#)

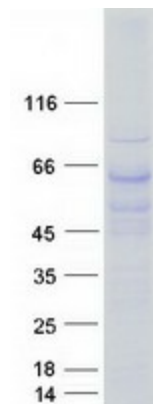
Cytogenetics: Xp22.31-p22.2

Summary: The protein encoded by this gene has sequence similarity with members of the WD40 repeat-containing protein family. The WD40 group is a large family of proteins, which appear to have a regulatory function. It is believed that the WD40 repeats mediate protein-protein interactions and members of the family are involved in signal transduction, RNA processing, gene regulation, vesicular trafficking, cytoskeletal assembly and may play a role in the control of cytotypic differentiation. This encoded protein is found as a subunit in corepressor SMRT (silencing mediator for retinoid and thyroid receptors) complex along with histone deacetylase 3 protein. This gene is located adjacent to the ocular albinism gene and it is thought to be involved in the pathogenesis of the ocular albinism with late-onset sensorineural deafness phenotype. Four transcript variants encoding two different isoforms have been found for this gene. This gene is highly similar to the Y chromosome TBL1Y gene. [provided by RefSeq, Nov 2008]

Protein Families: Transcription Factors

Protein Pathways: Wnt signaling pathway

Product images:



Coomassie blue staining of purified TBL1X protein (Cat# [TP313516]). The protein was produced from HEK293T cells transfected with TBL1X cDNA clone (Cat# [RC213516]) using MegaTran 2.0 (Cat# [TT210002]).