

Product datasheet for PH313502

Cytochrome P450 2E1 (CYP2E1) (NM_000773) Human Mass Spec Standard

Product data:

Product Type:	Mass Spec Standards
Description:	CYP2E1 MS Standard C13 and N15-labeled recombinant protein (NP_000764)
Species:	Human
Expression Host:	HEK293
Expression cDNA Clone or AA Sequence:	RC213502
Predicted MW:	56.8 kDa
Protein Sequence:	>Peptide sequence encoded by RC213502 Blue=ORF Red=Cloning site Green=Tag(s)

MSALGVTVALLVWAAFLLLVSMWRQVHSSWNLPPGPFPLPIIGNLFQLELKNIPKSFTRLAQRFGPVFT
LYVGSQRMVVMHGYKAVKEALLDYKDEFSGRGDLPAFHAHRDRGIIFNNGPTWKDIRRSLTTLRNYGM
GKQGNESRIQREAHFLLEALRKTQGQPFDPFTFLIGCAPCNVIADILFRKHFDYNDEKFLRLMYLFNENF
HLLSTPWLQLYNNFPSFLHYLPGSHRKVIKNVAEVKEYVSERVKEHHQSLDPNCPRLDCLLVEMEKE
KHSERLYTMDGITVTVADLFFAGTETTSTTLRYGLLILMKYPEIEEKLHEEIDRVIGPSRIPAIDRQ
EMPYMDAVVHEIQRFITLVPSNLPHEATRDTIFRGLIPKGTVVVPTLDSVSYDNQEPDPEKFKPEHF
LNENGFYKYSDFKPFSTGKRVKAGEGLARMELFLLLCAILQHFNLKPLVDPKDIDLSPIHIGFGCIPP
RYKLCVIPRS
TRTRPLEQKLISEEDLAANDILDYKDDDDKV

Recombinant protein using RC213502 also available, [TP313502M](#)

Tag:	C-Myc/DDK
Purity:	> 80% as determined by SDS-PAGE and Coomassie blue staining
Concentration:	>0.05 µg/µL as determined by microplate BCA method
Labeling Method:	Labeled with [U- ¹³ C ₆ , ¹⁵ N ₄]-L-Arginine and [U- ¹³ C ₆ , ¹⁵ N ₂]-L-Lysine
Buffer:	25 mM Tris-HCl, 100 mM glycine, pH 7.3
Storage:	Store at -80°C. Avoid repeated freeze-thaw cycles.
Stability:	Stable for 3 months from receipt of products under proper storage and handling conditions.
RefSeq:	NP_000764
RefSeq Size:	1667
RefSeq ORF:	1479



[View online »](#)

Synonyms: CPE1; CYP2E; P450-J; P450C2E

Locus ID: 1571

UniProt ID: [P05181](#)

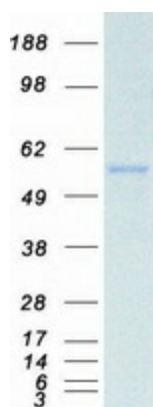
Cytogenetics: 10q26.3

Summary: This gene encodes a member of the cytochrome P450 superfamily of enzymes. The cytochrome P450 proteins are monooxygenases which catalyze many reactions involved in drug metabolism and synthesis of cholesterol, steroids and other lipids. This protein localizes to the endoplasmic reticulum and is induced by ethanol, the diabetic state, and starvation. The enzyme metabolizes both endogenous substrates, such as ethanol, acetone, and acetal, as well as exogenous substrates including benzene, carbon tetrachloride, ethylene glycol, and nitrosamines which are premutagens found in cigarette smoke. Due to its many substrates, this enzyme may be involved in such varied processes as gluconeogenesis, hepatic cirrhosis, diabetes, and cancer. [provided by RefSeq, Jul 2008]

Protein Families: Druggable Genome, P450, Transmembrane

Protein Pathways: Arachidonic acid metabolism, Drug metabolism - cytochrome P450, Linoleic acid metabolism, Metabolic pathways, Metabolism of xenobiotics by cytochrome P450

Product images:



Coomassie blue staining of purified CYP2E1 protein (Cat# [TP313502]). The protein was produced from HEK293T cells transfected with CYP2E1 cDNA clone (Cat# [RC213502]) using MegaTran 2.0 (Cat# [TT210002]).