

Product datasheet for PH313430

CLUAP1 (NM_024793) Human Mass Spec Standard

Product data:

Product Type:	Mass Spec Standards
Description:	CLUAP1 MS Standard C13 and N15-labeled recombinant protein (NP_079069)
Species:	Human
Expression Host:	HEK293
Expression cDNA Clone or AA Sequence:	RC213430
Predicted MW:	48.2 kDa
Protein Sequence:	>RC213430 protein sequence Red=Cloning site Green=Tags(s)
	MSFRDLRNFTEMMRALGYPRHISMENFRTPNFGLVSEVLLWLVKRYEPQTDIPPDVDTEQDRVFFIKAIA QFMATKAHIKLNKLYQADGYAVKELLKITSVLNAMKTKGMEGSEIVEEDVNFKFDLGSKIADLKAA RQLASEITSKGASLYDLLGMEVELREMRTEAIARPLEINETEKVMRIAIKEILTQVQKTKDLLNNVASDE ANLEAKIEKRKLELERNRKRLETLSVVRPCFMDEYEKTEEELQKQYDYLEKFNLTYLEQQLEDHHRME QERFEEAKNTLCLIQNKLKEEKRLKSGSNDDSDIDIQEDDESSELEERRLPKPQTAMEMLMQGRPGK RIVGTMQGGSDDDNEDSESEIDMEDDDDEDDLEDESISLSPTKPNRRVWKSEPLDESNDNF
	TRTRPLEQKLISEEDLAANDILDYKDDDDKV
Tag:	C-Myc/DDK
Purity:	> 80% as determined by SDS-PAGE and Coomassie blue staining
Concentration:	>0.05 µg/µL as determined by microplate BCA method
Labeling Method:	Labeled with [U- ¹³ C ₆ , ¹⁵ N ₄]-L-Arginine and [U- ¹³ C ₆ , ¹⁵ N ₂]-L-Lysine
Buffer:	25 mM Tris-HCl, 100 mM glycine, pH 7.3
Storage:	Store at -80°C. Avoid repeated freeze-thaw cycles.
Stability:	Stable for 3 months from receipt of products under proper storage and handling conditions.
RefSeq:	<u>NP_079069</u>
RefSeq Size:	3616
RefSeq ORF:	1242
Synonyms:	CFAP22; FAP22; IFT38
Locus ID:	23059



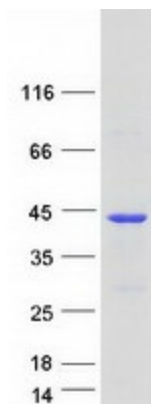
[View online »](#)

UniProt ID: [Q96AJ1](#)

Cytogenetics: 16p13.3

Summary: The protein encoded by this gene contains a single coiled-coil region. Alternative splicing results in multiple transcript variants and protein isoforms. [provided by RefSeq, Jul 2012]

Product images:



Coomassie blue staining of purified CLUAP1 protein (Cat# [TP313430]). The protein was produced from HEK293T cells transfected with CLUAP1 cDNA clone (Cat# [RC213430]) using MegaTran 2.0 (Cat# [TT210002]).